



**okuma**  
INSPIRED FISHING



41



50



76



79

## RODS

- COMBOS**
  - 4** Vibe Combos
  - 5** Fin Chaser Combo
  - 6** Aria Combo
  - 6** Safina Combo
  - 7** Invader Carp Combo
  - 8** Revenger Pro X Surf Spin Combo
- GENERAL**
  - 8** Cascade Spinning Rod
  - 9** G-Force Telescopic Fiberglass
  - 9** G-Force Fiberglass Rods
  - 10** G-Force Short Butt
  - 10** Wave Power Telescopic Spinning
  - 11** Wave Power
  - 11** Sloppy Paddle Ski Rods
  - 12** Sloppy LTB
  - 12** Blue Carbon
  - 13** Revenger Pro Short Butt
  - 13** Altera Telescopic
  - 14** LRF Rod - UFR Flex Tip
  - 14** LITE SX Finesse
- BASS**
  - 15** Fuel Spin Baitcasting Combo
  - 15** Scorpio Baitcasting Combo
  - 16** Pink Rose
  - 16** Stratus 2-PC Bass Rod
  - 17** Tactical UFR Bass Rods
  - 18** Recon Bass Rods
  - 18** Hitch Hiker
  - 20** Serrano Blue
  - 20** Raw
- FLY**
  - 21** Airframe
  - 21** Sierra
- CARP**
  - 22** C-Power Carp Rods
  - 23** Barbarian Black
  - 23** Barbarian Pink
  - 24** Barbarian Low Rider
  - 24** C-Fight Carp
  - 25** Interceptor
  - 26** Longbow Tournament
  - 26** Custom Black
  - 27** 8K Specimen Carp
- TRAVEL**
  - 28** Nomad Travel Series
- SALTWATER SPINNING**
  - 29** Caspian Spinning
  - 29** Matrix Spinning
  - 30** Recon Inshore Spinning
  - 30** Pro Series 3PC Travel Series
  - 31** Pulse Shore Jigging / Bucktail
- ROCK & SURF**
  - 31** Rock Ranger Short Butt
  - 32** Wave Power Surf Spin
  - 32** Azores Slim
  - 33** Precision 3PC
  - 34** Makaira Blue
  - 34** SLX Drone Rods
  - 36** Areal
  - 36** UTG Sabiki

## RODS

[CONTINUED]

### BOAT

- 37** Azores Boat
- 38** SLX Elite
- 38** Metaloid Slow Jigging
- 39** Metaloid Jigging
- 40** Metaloid Flick Stick
- 40** Metaloid Popping
- 41** PCH Boat & Shore Popping
- 42** Tesoro Speed Jigging
- 42** Makaira Stickbait
- 43** Makaira Stand Up
- 43** Makaira Bent Butt
- 43** Makaira Bent Butt Electric

## REELS

### FRONT DRAG

- 44** Cascade
- 44** Aria
- 45** Azaki
- 45** Revenger Pro
- 46** Safina
- 46** Jaw
- 47** Blue Diamond
- 47** Tomcat
- 48** Ceymar
- 48** Epixor XT
- 49** Helios
- 50** ITX
- 51** Atomic Carp
- 51** X Spot
- 52** Inception
- 52** Custom Black
- 53** 8k
- 53** Surf 8K
- 54** Azores XP
- 54** Azores Blue
- 55** Cedros
- 56** Salina II
- 56** Metaloid
- 57** Makaira

### BAITFEEDER

- 58** Carbonite
- 58** AK
- 59** Barbarian
- 59** Longbow XR
- 60** Ceymar XT Baitfeeder
- 60** LS-8K
- 61** LS-8k
- 62** Aventa
- 63** Aventa Pro
- 64** Airframe
- 65** Classic
- 65** Classic Pro
- 66** Solterra SLX
- 67** Cavalla

### FLY

### MULTIPLIER

## REELS

### BAITCASTER

- 68** Makaira
- 70** Ceymar
- 70** Serrano
- 71** Hakai

## ACCESSORIES

- 72** Reel Grease & Oil
- 72** Rod Strap
- 72** Spool Band
- 73** Multiplier Reel Bag
- 73** Spinning Reel Bag
- 73** Multiplier Reel Holder
- 74** Spinning Reel Holder
- 74** Rod Rack ABS
- 74** Rod Rack Wooden

## APPAREL

### HEADWEAR

- 75** Recon Cap
- 75** Olive Camo
- 75** Red Cap
- 75** Royal Cap
- 75** Black Cotton Cap
- 76** Black Mesh Cap
- 76** Pink Cotton Cap
- 76** Black Camouflage Cap
- 76** Royal Beanie
- 76** Khaki Beanie

### UV GEAR

- 77** Sunshade
- 77** Sleeve

### SHIRTS

- 78** Short Sleeve Gamefish
- 78** Long Skeleton Nlue
- 78** Long Sleeve Camo
- 79** Long Sleeve Gamefish
- 79** Long Sleeve Black Blue Claw
- 79** Long Sleeve Tournament



## VIBE COMBOS

- » 1BB bearing drive for durability and smoothness
- » Multi-disc oil felt drag washers
- » Durable glass fiber rod blank construction
- » Durable Dura-flow stainless steel guides
- » Comfortable EVA rear split grips
- » Available in Blue/Green/Pink/Orange

### TECH SPECS:

CODE	LENGTH	POWER	CASTING WEIGHT	SECTIONS	TYPE	REEL MODEL	BEARINGS	COLOUR	WITH LINE	LINE CAPACITY/(LB)
VB-602M-25BU	6' 0"	6' 0"	-	2-pcs	Spinning	VB-25	1BB	Blue	Yes	265/3, 220/4, 180/6
VB-602M-25GR	6' 0"	6' 0"	-	2-pcs	Spinning	VB-25	1BB	Green	Yes	265/3, 220/4, 180/6
VB-602M-25OR	6' 0"	6' 0"	-	2-pcs	Spinning	VB-25	1BB	Orange	Yes	265/3, 220/4, 180/6
VB-602M-25PK	6' 0"	6' 0"	-	2-pcs	Spinning	VB-25	1BB	Pink	Yes	265/3, 220/4, 180/6
VB-702M-30BU	7' 0"	7' 0"	-	2-pcs	Spinning	VB-30	1BB	Blue	Yes	310/3, 250/4, 165/6
VB-702M-30GR	7' 0"	7' 0"	-	2-pcs	Spinning	VB-30	1BB	Green	Yes	310/3, 250/4, 165/6
VB-702M-30OR	7' 0"	7' 0"	-	2-pcs	Spinning	VB-30	1BB	Orange	Yes	310/3, 250/4, 165/6
VB-702M-30PK	7' 0"	7' 0"	-	2-pcs	Spinning	VB-30	1BB	Pink	Yes	310/3, 250/4, 165/6



## FIN CHASER COMBO

- » Multi colored combo series
- » Durable glass fiber rod blank construction
- » 1 ball bearing drive on 6'0" – 12'0" models
- » Multi-disc drag washers
- » Durable ceramic guide inserts
- » Comfortable cork fore and rear grips on 6'0"-6'6"
- » EVA grips on 6'0"-12'0" models
- » Spinning reels are all front drag control
- » Two-tone anodized aluminum spools
- » Fin Chaser combos are pre-spooled with line

### TECH SPECS:

CODE	LENGTH	POWER	CASTING WEIGHT	SECTIONS	TYPE	REEL MODEL	BEARINGS	COLOUR	WITH LINE	LINE CAPACITY(LB)
FN-602M-25B	6'0"	M	-	2PC	Spinning	25	1BB	Blue	Yes	310/3, 250/4, 165/6
FN-602M-25R	6'0"	M	-	2PC	Spinning	25	1BB	Red	Yes	310/3, 250/4, 165/6
FN-602M-25S	6'0"	M	-	2PC	Spinning	25	1BB	Silver	Yes	310/3, 250/4, 165/6
FN-702M-30B	7'0"	M	-	2PC	Spinning	30	1BB	Blue	Yes	190/10, 140/12, 110/15
FN-702M-30R	7'0"	M	-	2PC	Spinning	30	1BB	Red	Yes	190/10, 140/12, 110/15
FN-702M-30S	7'0"	M	-	2PC	Spinning	30	1BB	Silver	Yes	190/10, 140/12, 110/15
FN-802M-40B	8'0"	M	-	2PC	Spinning	40	1BB	Blue	Yes	155/18, 125/20, 90/30
FN-802M-40R	8'0"	M	-	2PC	Spinning	40	1BB	Red	Yes	155/18, 125/20, 90/30
FN-802M-40S	8'0"	M	-	2PC	Spinning	40	1BB	Silver	Yes	155/18, 125/20, 90/30
FN-1002M-65B	10'0"	M	-	2PC	Spinning	65	1BB	Blue	Yes	300/15, 190/20, 130/35
FN-1002M-65S	10'0"	M	-	2PC	Spinning	65	1BB	Silver	Yes	300/15, 190/20, 130/35
FN-1202M-80B	12'0"	M	-	2PC	Spinning	80	1BB	Blue	Yes	300/15, 190/20, 130/35
FN-1202M-80S	12'0"	M	-	2PC	Spinning	80	1BB	Silver	Yes	300/15, 190/20, 130/35

## ARIA COMBO



- » 1 ball bearing drive for smoothness and durability
- » Machined aluminum, anodized spool
- » Precision machine cut brass pinion gear
- » Fast action, composite quality blank
- » EVA grips
- » Premium Okuma graphite reel seat
- » Aria combos are pre-spooled with line

### TECH SPECS:

CODE	LENGTH	POWER	CASTING WEIGHT	SECTIONS	TYPE	REEL MODEL	BEARINGS	COLOUR	WITH LINE	LINE CAPACITY/(DIAMETER)
AR-S-662MH-30	6'6"	MH	-	2PC	Spinning	30	1BB	B & W	Yes	0.20/300, 0.25/200, 0.30/130
AR-S-702MH-30	7'0"	MH	-	2PC	Spinning	30	1BB	B & W	Yes	0.20/300, 0.25/200, 0.30/130
AR-S-802MH-40	8'0"	MH	-	2PC	Spinning	40	1BB	B & W	Yes	0.25/260, 0.30/180, 0.35/130

## SAFINA NEW FOR 2021



- » 1 Ball Bearing + 1 one way bearing
- » Machined two tone aluminium spool
- » CFR - Cyclonic flow rotor
- » Quick-Set infinite anti-reverse system
- » Rigid aluminium handle
- » Fast Action 2pc composite (60% Carbon) blank construction

### TECH SPECS:

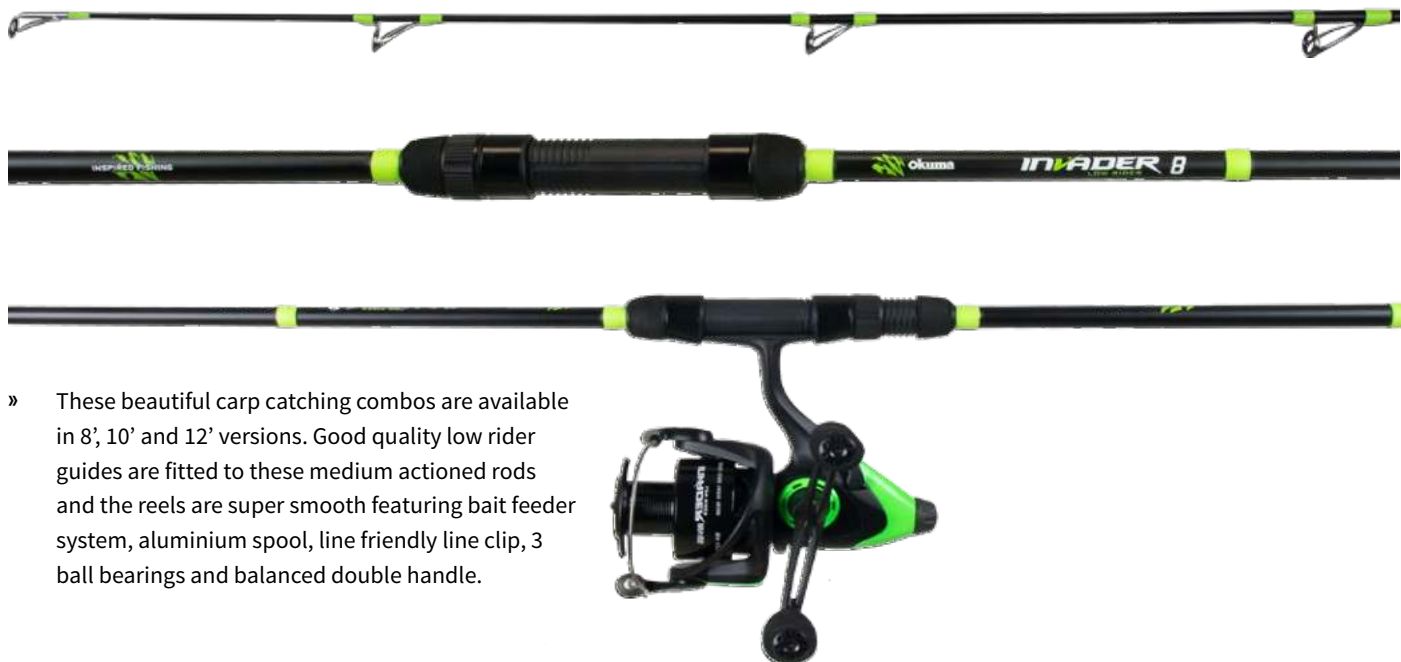
CODE	LENGTH	POWER	CASTING WEIGHT	SECTIONS	TYPE	REEL MODEL	BEARINGS	COLOUR	WITH LINE	LINE CAPACITY/(DIAMETER)
SF-S-662M-30	6'6"	M	-	2PC	Spinning	30	1+1BB	B & S	NO	0.20/265, 0.25/170, 0.30/115
SF-S-702MH-30	7'0"	MH	-	2PC	Spinning	30	1+1BB	B & S	NO	0.20/265, 0.25/170, 0.30/115
SF-S-802MH-30	8'0"	MH	-	2PC	Spinning	30	1+1BB	B & S	NO	0.20/265, 0.25/170, 0.30/115
SF-S-1002MH-60	10'0"	MH	-	2PC	Spinning	60	1+1BB	B & S	NO	0.30/275, 0.35/200, 0.40/155
SF-S-1102MH-60	11'0"	MH	-	2PC	Spinning	60	1+1BB	B & S	NO	0.30/275, 0.35/200, 0.40/155
SF-S-1202MH-60	12'0"	MH	-	2PC	Spinning	60	1+1BB	B & S	NO	0.30/275, 0.35/200, 0.40/155





## INVADER CARP COMBO

NEW FOR 2021



- » These beautiful carp catching combos are available in 8', 10' and 12' versions. Good quality low rider guides are fitted to these medium actioned rods and the reels are super smooth featuring bait feeder system, aluminium spool, line friendly line clip, 3 ball bearings and balanced double handle.

### TECH SPECS:

CODE	LENGTH	TEST CURVE	CASTING WEIGHT	SECTIONS	TYPE	REEL MODEL	BEARINGS	COLOUR	WITH LINE	LINE CAPACITY/(LB)
INV-S-802-40	8'0"	2.75lbs	10-60g	2PC	Spinning	40	3BB	B G G	NO	-
INV-S-1002-40	10'0"	3.0lbs	20-85g	2PC	Spinning	40	3BB	B G G	NO	-
INV-V-1202-55	12'0"	3.5lbs	25-100g	2PC	Spinning	55	3BB	B G G	NO	-

## REVENGER PRO X SURF SPIN COMBO



- » Multi-disc, oiled felt drag system
- » 3 ball bearing for ultimate smoothness
- » Multi-stop anti-reverse system
- » Machined aluminum, anodized spool
- » Corrosion-resistant graphite body
- » Rigid aluminum handle arm for strength
- » Corrosion-resistant, stainless steel bail wire
- » RESII: Computer balanced Rotor Equalizing System



### TECH SPECS:

CODE	LENGTH	POWER	CASTING WEIGHT	SECTIONS	TYPE	REEL MODEL	BEARINGS	WITH LINE	LINE CAPACITY/(DIAMETER)
RVPX-C-1002	10'0"	MH	-	2PC	Spinning	55	3BB	NO	0.30/310, 0.35/205, 0.40/170
RVPX-C-1202	12'0"	MH	-	2PC	Spinning	55	3BB	NO	0.30/310, 0.35/205, 0.40/170



## CASCADE SPINNING ROD

- » Fiberglass 2pc blank
- » EVA grips
- » Split butt design
- » Medium Action
- » Durable S/Steel frame and insert guides

### TECH SPECS:

CODE	POWER	TYPE	LENGTH	SECTIONS	CASTING WT
CS-S-602M	M	Spinning	6'0"	2PC	8-25g
CS-S-702M	M	Spinning	7'0"	2PC	10-30g
CS-S-802M	M	Spinning	8'0"	2PC	15-40g





## G-FORCE TELESCOPIC FIBERGLASS RODS

- » FPS graphite reel seat
- » High Quality guides
- » Lightweight
- » Japanese EVA handles

### TECH SPECS:

CODE	POWER	TYPE	LENGTH	SECTIONS	CASTING WT
750004	M	Spinning	6'0"	Telescopic	5-15g
750005	M	Spinning	7'0"	Telescopic	10-30g
750006	M	Spinning	8'0"	Telescopic	20-40g
750007	M	Spinning	10'0"	Telescopic	20-60g
750008	M	Spinning	12'0"	Telescopic	20-60g



## G-FORCE FIBERGLASS

- » FPS graphite reel seat
- » High Quality guides
- » Lightweight
- » Japanese EVA handles

### TECH SPECS:

CODE	POWER	TYPE	LENGTH	SECTIONS	CASTING WT
GF-S-602M	M	Spinning	6'0"	2PC	5-20g
GF-S-702M	M	Spinning	7'0"	2PC	5-20g
GF-S-802M	M	Spinning	8'0"	2PC	10-30g
GF-S-902M	M	Spinning	9'0"	2PC	20-60g
GF-S-1002M	M	Spinning	10'0"	2PC	40-80g
GF-S-1202M	M	Spinning	12'0"	2PC	60-100g



## G-FORCE SHORT BUTT

- » FPS graphite reel seat
- » High Quality guides
- » Lightweight
- » Japanese EVA handles

### TECH SPECS:

CODE	POWER	TYPE	LENGTH	SECTIONS	CASTING WT
GF-SB-802M	M	Spinning	8'0"	2PC	10-30g
GF-SB-902M	M	Spinning	9'0"	2PC	20-60g
GF-SB-1002M	M	Spinning	10'0"	2PC	40-80g
GF-SB-1202M	M	Spinning	12'0"	2PC	60-100g



## WAVE POWER TELESCOPIC SPINNING

- » 24T GT blank construction
- » Fast action
- » Stainless steel frame SIC guides
- » 3 Split EVA handle to reduce the weight and good balance
- » Graphite cushions reel seat

### TECH SPECS:

CODE	POWER	TYPE	LENGTH	SECTIONS	CASTING WT
WP-S-605MT	M	Spinning	6'0"	1PC	5-20g
WP-S-705MT	M	Spinning	7'0"	1PC	10-30g
WP-S-806MT	M	Spinning	8'0"	1PC	15-40g
WP-S-907MT	M	Spinning	9'0"	1PC	20-50g
WP-S-1007MT	M	Spinning	10'0"	1PC	25-60g





## WAVE POWER

- » 24T GT blank construction
- » Fast action
- » Stainless steel frame SIC guides
- » 3 Split EVA handle to reduce the weight and good balance
- » Graphite cushions reel seat
- » Designed to match Okuma Aria spin reels

### TECH SPECS:

CODE	POWER	TYPE	LENGTH	SECTIONS	CASTING WT
WP-S-662M	M	Spinning	6'6"	2PC	20-50g
WP-S-702MH	MH	Spinning	7'0"	2PC	20-60g
WP-S-802H	H	Spinning	8'0"	2PC	30-80g
WP-S-902H	H	Spinning	9'0"	2PC	30-100g



## SLOPPY PADDLE SKI

- » FPS graphite reel seat
- » High Quality guides
- » Lightweight
- » Japanese EVA handles
- » UFR blank design (Ultimate Flex Reinforcement)
- » 3X the strength and lifting power of traditional rods



### TECH SPECS:

CODE	POWER	TYPE	LENGTH	SECTIONS	CASTING WT
SL-S-461MH	MH	Spinning	4'6"	1PC	6-12g
SL-S-561MH	MH	Spinning	5'6"	1PC	8-12g



## SLOPPY LTB

- » UFR blank design (Ultimate Flex Reinforcement)
- » 3X the strength and lifting power of traditional rods
- » High quality guides
- » Light weight
- » Japanese EVA

### TECH SPECS:

CODE	POWER	TYPE	LENGTH	SECTIONS	CASTING WT
SL-S-461ML	ML	Spinning	4'6"	1PC	3-6g
SL-S-602ML	ML	Spinning	6'0"	2PC	-
SL-S-661M	M	Spinning	6'6"	1PC	LTB
SL-S-701M	M	Spinning	7'0"	1PC	LTB



## BLUE CARBON

- » Ultra-responsive 24-carbon blank construction.
- » Quality stainless steel frame guides.
- » Polished titanium oxide inserts reduce friction.
- » Okuma graphite reel seat.
- » Full hard EVA handles.
- » Durable EVA end cap
- » Cloth bag included

### TECH SPECS:

CODE	POWER	TYPE	LENGTH	SECTIONS	CASTING WT
BC-S-702H	H	Spinning	7'0"	2PC	14-42g
BC-S-802H	H	Spinning	8'0"	2PC	25-56g
BC-S-902H	H	Spinning	9'0"	2PC	28-70g
BC-S-1002H	H	Spinning	10'0"	2PC	42-48g
BC-S-1102H	H	Spinning	11'0"	2PC	42-84g



## REVENGER PRO SHORT BUTT

- » All models with short butt.
- » Ultra-responsive 24-carbon blank construction.
- » Quality stainless steel frame guides.
- » Polished titanium oxide inserts reduce friction.
- » Okuma graphite reel seat.
- » Full hard EVA handles.
- » Cloth bag included.

### TECH SPECS:

CODE	POWER	TYPE	LENGTH	SECTIONS	CASTING WT
RVPX-SB-702H	H	Spinning	7'0"	2PC	20-60g
RVPX-SB-802H	H	Spinning	8'0"	2PC	30-80g
RVPX-SB-902H	H	Spinning	9'0"	2PC	30-100g
RVPX-SB-1002H	H	Spinning	10'0"	2PC	40-120g
RVPX-SB-1102H	H	Spinning	11'0"	2PC	40-110g



## ALTERA TELESCOPIC

- » 24T ultra-light carbon blank construction.
- » Slim blanks with fast action.
- » Matt gunsmoke frame SIC guides.
- » Okuma graphite reel seat.
- » Aluminum screw end cap with non-skid rubber.
- » Quality guide cover and cloth bag included.

### TECH SPECS:

CODE	POWER	TYPE	LENGTH	SECTIONS	CASTING WT
ATE-S-806MT	M	Spinning	8'0"	Telescopic	15-40g







# UFR

## LRF ROD - UFR FLEX TIP

- » Great quality durable material
- » EVA grips
- » Split butt design
- » Medium Action

Okuma's UFR® technology is a breakthrough design in rod strength and sensitivity. Our patented UFR® manufacturing process utilizes an outer layer of longitudinal fibers around the rod blank in the extended tip section. The result is 300% increase in lifting power and a flexible tip increasing durability and protecting against breaks.

### TECH SPECS:

CODE	POWER	TYPE	LENGTH	SECTIONS	CASTING WT
LRF-S-462UL	UL	Spinning	4'6"	2PC	1-7g
LRF-S-562LM	LM	Spinning	5'6"	2PC	-
LRF-S-602	M	Spinning	6'0"	2PC	1-7g
LRF-S-702	M	Spinning	7'0"	2PC	3-12g



## LITE SX FINESSE

- » 40 Ton Toray Carbon
- » Ultimate Finesse Rod
- » Crisp Action, Light Weight
- » Hidden Thread Sea Guide Reel Seat
- » Single Foot Lightweight Sea Guides
- » 4 X 2pc Models

### TECH SPECS:

CODE	POWER	TYPE	LENGTH	SECTIONS	CASTING WT
LT-S-462UL	UL	Spinning	4'6"	2PC	1-7g
LT-S-562UL	UL	Spinning	5'6"	2PC	2-8g
LT-S-66L	L	Spinning	6'6"	2PC	7-18g
LT-S-702M	M	Spinning	7'0"	2PC	8-20g
LT-S-802MH	MH	Spinning	8'0"	2PC	15-40g



## FUEL SPIN NEW FOR 2021 BAITCASTING COMBO 6.5:1 REEL

The Fuel Spin Baitcasting Combo features a motor sport inspired design and is built around a 24T GT blank construction with EVA handles to reduce weight and increase the overall balance.

### REEL:

The Fuel Spin Low Profile Baitcast Reel is constructed from a corrosion-resistant graphite frame and sideplates, and A6061-T6 machined aluminum spool. It also features multi-disc composite drag system and sideplate access port which can change the spool quickly.

- » 3BB +1RB bearing drive system
- » External adjustable magnetic cast control



### TECH SPECS:

CODE	LENGTH	TYPE	POWER	ACTION	CASTING WT	SECTIONS	APPLICATIONS
FS-C-702MH	7'0"	Casting	MH	FAST	5-21g	1PC	All Rounder



## SCORPIO NEW FOR 2021 BAITCASTING COMBO 7.2:1 REEL

### ROD:

- » 24 TON Carbon Blank
- » Natural Cork Grips

### REEL

- » Corrosion-resistant graphite frame and sideplates
- » A6061-T6 machined aluminum, anodized U-shaped spool
- » Multi-disc composite drag system
- » 5BB+1RB bearing drive system
- » External adjustable magnetic cast control system
- » Quick-Set anti-reverse roller bearing



### TECH SPECS:

CODE	LENGTH	TYPE	POWER	ACTION	CASTING WT	SECTIONS	APPLICATIONS
SP-C-701MH	7'0"	Casting	MH	-	7-21g	1PC	All Rounder
SP-C-702MH	7'0"	Casting	MH	-	7-21g	2PC	All Rounder



## PINK ROSE

- » FPS graphite reel seat
- » High Quality guides
- » Lightweight
- » Japanese EVA handles

### TECH SPECS:

CODE	LENGTH	TYPE	POWER	ACTION	CASTING WT	SECTIONS	APPLICATIONS
PR-S-702MH	7'0"	Spinning	MH	-	15-40g	2	ALL PURPOSE



## STRATUS 2-PC BASS RODS

- » 24 Ton Toray Carbon
- » Black EVA Grips
- » Exposed blank, trigger reel seat for sensitivity
- » Anodized aluminium reel seat hood

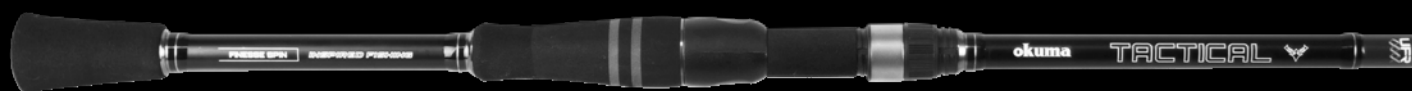


### TECH SPECS:

CODE	LENGTH	TYPE	POWER	ACTION	CASTING WT	SECTIONS	APPLICATIONS
ST-C-662MH	6'6"	Casting	MH	-	1/4-3/4oz	2PC	All Rounder
ST-C-702MH	7'0"	Casting	MH	-	1/4-3/4oz	2PC	All Rounder
ST-S-702MH	7'0"	Spinning	MH	-	1/4-3/4oz	2PC	All Rounder

# UFR

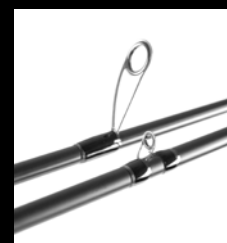
Okuma's UFR® technology is a breakthrough design in rod strength and sensitivity. Our patented UFR® manufacturing process utilizes an outer layer of longitudinal fibers around the rod blank in the extended tip section. The result is 300% increase in lifting power and a flexible tip increasing durability and protecting against breaks. UFR® tips are tough but sensitive to even the of lightest bites, even when using heavy lures and baits.



## OKUMA TACTICAL UFR BASS RODS

Okuma Tactical, technique specific rods feature high modulus ultra-sensitive and responsive carbon blank construction, fast taper with UFR TIP design increases rod tip lifting power by 3 times.

- » High modulus ultra-sensitive and responsive carbon blank construction.
- » Fast taper with UFR TIP design.
- » Anti-tangle stainless steel guides frame.
- » Double footed guides with polished titanium oxide guide inserts.
- » Okuma tooling split trigger reel seat.
- » Hard EVA split handle design.
- » Quality cloth bag package.



### TECH SPECS:

CODE	LENGTH	TYPE	POWER	ACTION	CASTING WT	SECTIONS	APPLICATIONS
TT-C-661MU	6'6"	Casting	M	-	4-18g	1PC	Top Water
TT-C-6101MHU	6'10"	Casting	MH	-	7-28g	1PC	Spinner Bait
TT-S-701MH	7'0"	Spinning	MH	-	7-21g	1PC	Finesse
TT-C-701MHU	7'0"	Casting	MH	-	7-21g	1PC	Finesse Worm
TT-C-701H	7'0"	Casting	H	-	-	1PC	Worming
TT-C-741MHU	7'4"	Casting	MH	-	7-42g	1PC	Cranking
TT-C-741H	7'4"	Casting	H	-	-	1PC	Frogging
TT-S-562UL	5'6"	Spinning	UL	-	-	2PC	Ultra Lite
TT-S-702MH	7'0"	Spinning	MH	-	-	2PC	Finesse
TT-C-702MH	7'0"	Casting	MH	-	-	2PC	Finesse Worm



## RECON BASS RODS

- » 30 Ton Toray Carbon
- » Cork Grips
- » Nano Carbon Technology
- » Reel seat with exposed blank for ultimate sensitivity
- » Down locking aluminium hood on reel seat
- » Lightweight aluminium oxide guides
- » Supplied in a cloth bag

### TECH SPECS:

CODE	LENGTH	TYPE	POWER	ACTION	CASTING WT	SECTIONS	APPLICATIONS
REC-C-691M	6'9"	Casting	M	-	1/8-5/8oz	1PC	Topwater/Jerbait
REC-C-701MH	7'0"	Casting	MH	-	1/4-3/4oz	1PC	All Rounder
REC-C-7111M	7'11"	Casting	M	-	1/8-5/8oz	1PC	Weightless/Deep Cranking
REC-C-741H	7'4"	Casting	H	-	3/8-1oz	1PC	Frogging
REC-S-6101ML	6'10"	Spinning	ML	-	1/8-1/2oz	1PC	Ned Rig
REC-S-701M	7'0"	Spinning	M	-	1/8-5/8oz	1PC	Dropshot/Finesse
REC-C-702MH	7'0"	Casting	MH	-	1/4-3/4oz	2PC	All Rounder
REC-S-702M	7'0"	Spinning	M	-	1/4-3/4oz	2PC	All Rounder



## HITCH HIKER

- » 30 Ton 4 pc carbon blank
- » Lightweight crisp action
- » Ultimate travel spinning rod for light spinning
- » Supplied in a cloth bag and cordura covered PVC tube

### TECH SPECS:

CODE	LENGTH	TYPE	POWER	ACTION	CASTING WT	SECTIONS	APPLICATIONS
HH-S-704MH	7'0"	Spinning	MH	-	7-21g	4	All Rounder





# LIGHTWEIGHT STRENGTH BUILT FOR ANY SITUATION

Our products are designed to create the ultimate fishing experience with your endurance in mind. What does this mean to anglers? Catch more fish and never give up on your passion. A lightweight rod means less fatigue and a more enjoyable fishing experience. Our UMR™ technology enables you to get the most out of your time fishing without compromising your rod's strength.

## ENHANCED STRENGTH WHERE IT MATTERS

Okuma's UMR™ technology takes an innovative approach to ensuring rod strength while remaining super lightweight. Every rod has its limitation; however, we've identified the weakest points of a rod's construction—the areas most likely to break under stress on conventional rods—and applied enhanced reinforcement to strengthen these key points to prevent breaking. This enables us to maximize rod strength while minimizing weight to ensure your rod is built for any challenge.

**ULTIMATE  
MATRIX  
REINFORCEMENT**





## SERRANO BLUE NEW FOR 2021

- » Super Light Weight 30Ton Toray Carbon Blank
- » Micro Guides
- » Okuma All Weather grips
- » Okuma Protective OPP Wrap – to protect against blank damage
- » Aluminium reel seat hood

### TECH SPECS:

CODE	LENGTH	TYPE	POWER	ACTION	CASTING WT	SECTIONS	APPLICATIONS
SRN-S-701M	7'0"	Spinning	M	-	2-11g	1PC	Ned Rig/Finesse
SRN-C-691M	6'9"	Casting	M	-	5-18g	1PC	Spinnerbait/Chatterbait
SRN-C-661MH	6'6"	Casting	MH	-	11-18g	1PC	Topwater/Jerkbait
SRN-C-701MH	7'0"	Casting	MH	-	7-21g	1PC	Texas/All Rounder
SRN-C-7111M	7'11"	Casting	M	-	5-18g	1PC	Deep Cranking/Weightless
SRN-C-741H	7'4"	Casting	H	-	11-21g	1PC	Frogging/Pitching



## RAW NEW FOR 2021

- » 40 Ton Toray Carbon Blank with UMR technology
- » Fuji Fazlite K-Series anti Tangle guides
- » Fuji Reel Seat
- » A Grade Cork full butt grips
- » A Grade Down locking fore grips with rubber cork trim
- » Supplied with a protective rod sock



### TECH SPECS:

CODE	LENGTH	TYPE	POWER	ACTION	CASTING WT	SECTIONS
RAW-C-691M	6'9"	Casting	M	-	10-30g	1PC
RAW-S-701M	7'0"	Spinning	M	-	10-30g	1PC
RAW-C-701MH	7'0"	Casting	MH	-	15-40g	1PC
RAW-C-741H	7'4"	Casting	H	-	20-70g	1PC
RAW-C-741M	7'4"	Casting	M	-	12-35g	1PC
RAW-C-702MH	7'0"	Casting	MH	-	15-40g	2PC
RAW-S-702MH	7'0"	Spinning	MH	-	10-30g	2PC



## AIRFRAME

- » 2-piece, sensitive graphite rod
- » Stainless steel snake guides
- » Cork Grips
- » Supplied in a cloth bag
- » Graphite reel seat



### TECH SPECS:

CODE	LENGTH	SECTIONS	LINE WT
AF-902-5	9'0"	2PC	5 wt.
AF-902-6	9'0"	2PC	6 wt.



## SIERRA

- » Light weight graphite construction
- » Medium fast action
- » Custom made aluminum pipe reel seat
- » High quality Portuguese cork handles
- » Stainless steel snake guides
- » Saltwater resistant stripping guides
- » Luxury velvet rod bag with a PVC tube

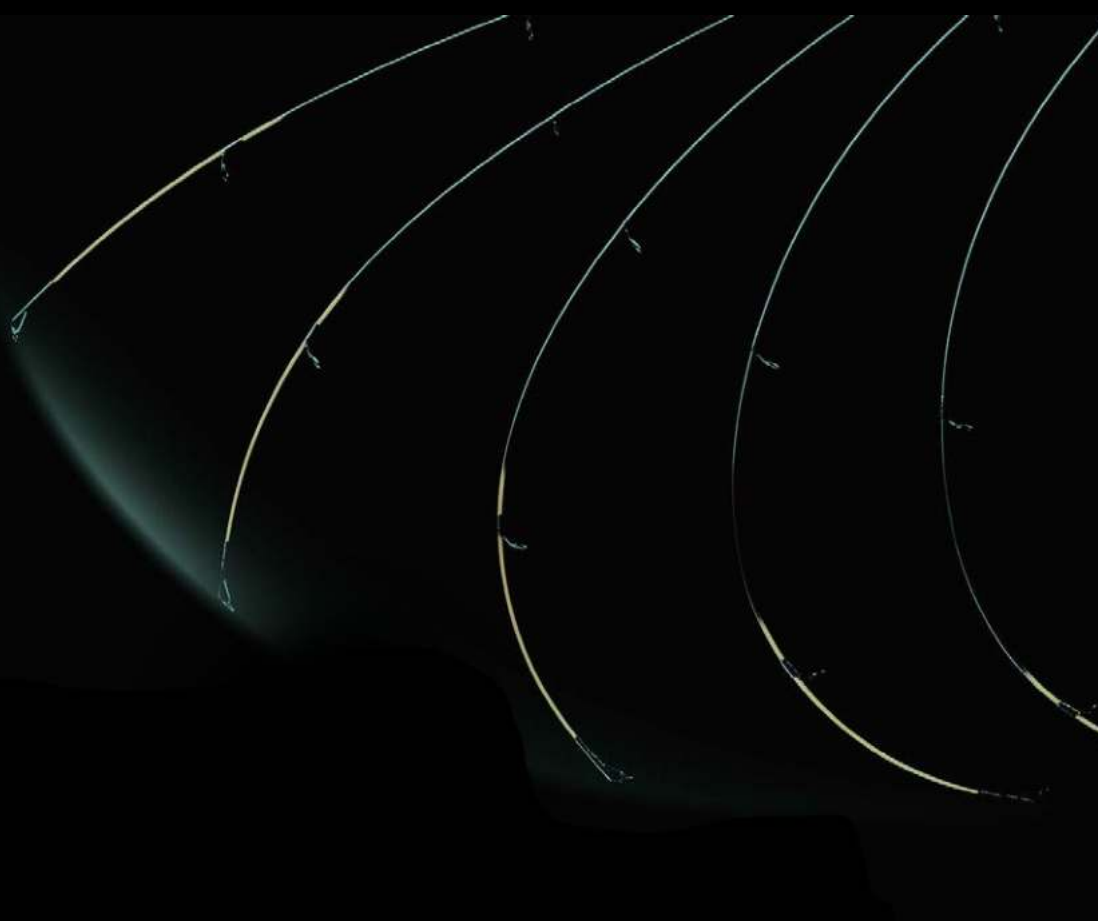


### TECH SPECS:

CODE	LENGTH	SECTIONS	LINE WT
SRF-904-5	9'0"	4PC	5 wt.
SRF-904-6	9'0"	4PC	6 wt.

# UFR

Okuma's UFR® technology is a breakthrough design in rod strength and sensitivity. Our patented UFR® manufacturing process utilizes an outer layer of longitudinal fibers around the rod blank in the extended tip section. The result is 300% increase in lifting power and a flexible tip increasing durability and protecting against breaks. UFR® tips are tough but sensitive to even the of lightest bites, even when using heavy lures and baits.



# UFR

## C-POWER CARP RODS

NEW FOR 2021

- » UFR (Ultimate Flex Reinforcement) Technology
- » Eva Grips
- » Light Weight Stainless Steel Guides And Inserts
- » 24 Ton Carbon Blank

TECH SPECS:					
CODE	LENGTH	WEIGHT	CASTING WT	TEST CURVE	SECTIONS
CP-S-902	9'0"	235g	15-60g	3.0lb	2PC
CP-S-1002	10'0"	275g	20-80g	3.0lb	2PC
CP-S-1202	12'0"	360g	25-100g	3.5lb	2PC



## BARBARIAN BLACK

- » Camo Eva Grips
- » 24 Ton Carbon Fiber Construction
- » Medium Fast Action
- » Titanium Oxide Standard shape guides
- » Ideal For Bank Angling

### TECH SPECS:

CODE	LENGTH	WEIGHT	CASTING WT	TEST CURVE	SECTIONS
BN-S-802	8'0"	-	15-60g	3.00lb	2PC
BN-S-1002	10'0"	-	20-80g	3.20lb	2PC
BN-S-1202	12'0"	-	25-100g	3.50lb	2PC



## BARBARIAN PINK

- » Camo Eva Grips
- » 24 Ton Carbon Fiber Construction
- » Medium Fast Action
- » Titanium Oxide Standard shape guides
- » Ideal For Bank Angling

### TECH SPECS:

CODE	LENGTH	WEIGHT	CASTING WT	TEST CURVE	SECTIONS
BNP-S-802	8'0"	-	15-60g	3.00lb	2PC
BNP-S-1002	10'0"	-	20-80g	3.20lb	2PC
BNP-S-1202	12'0"	-	25-100g	3.50lb	2PC





## BARBARIAN NEW FOR 2021 LOW RIDER

The Okuma BARBARIAN Rods have just got all the more wild with low rider guides. Upgraded and sassy, the Barbarian range of rods which have been around for many carp years feature a 24 Ton carbon blank with eye-catching black/grey camo grips. Available in 8 (NEW), 10 and 12ft models with a medium fast action to suit most casting styles.



### TECH SPECS:

CODE	LENGTH	WEIGHT	CASTING WT	TEST CURVE	SECTIONS
BNLR-S-802	8'0"	-	20-80g	3.2lbs	2PC
BNLR-S-1002	10'0"	-	20-80g	3.2lbs	2PC
BNLR-S-1202	12'0"	-	25-100g	3.5lbs	2PC



## C-FIGHT CARP

- » Light weight 24T carbon blank
- » Exclusive camouflage blank covering
- » Semi matt frame SIC guides
- » Slim EVA butt handle
- » Engraved aluminum butt cap
- » Graphite reel sat with cushions

### TECH SPECS:

CODE	LENGTH	WEIGHT	CASTING WT	TEST CURVE	SECTIONS
CF-CA-802M	8'0"	168g	-	2.5lb	2PC
CF-CA-902M	9'0"	208g	-	2.75lb	2PC
CF-CA-1002MH	10'0"	273g	-	3.0lb	2PC
CF-CA-1202MH	12'0"	-	-	3.5lb	2PC



## INTERCEPTOR

- » 30 Ton, 2pc Carbon
- » Low Rider Guides
- » Okuma Reel Seat
- » Supplied In Cloth Bag
- » Natural Cork Grips

### TECH SPECS:

CODE	LENGTH	WEIGHT	CASTING WT	TEST CURVE	SECTIONS
IR-S-1002	10'0"	-	20 - 85g	3.3lb	2PC
IR-S-1202	12'0"	-	25 - 100g	3.6lb	2PC
IR-S-1262	12'6"	-	30 - 115g	3.7lb	2PC

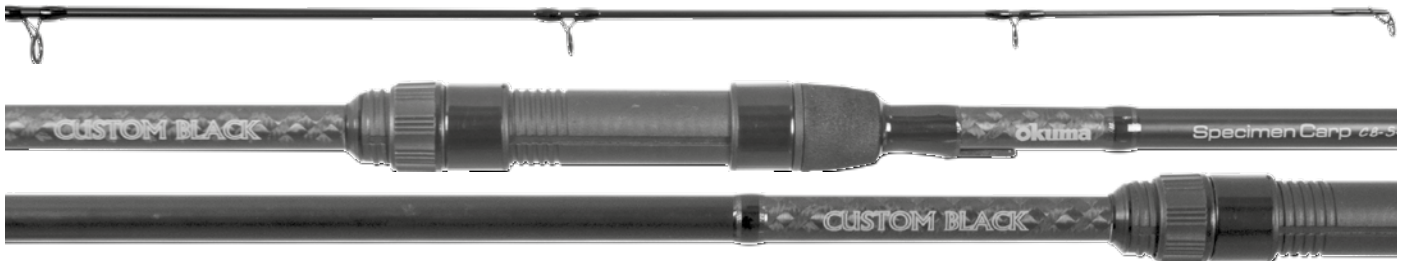


## LONGBOW NEW FOR 2021 TOURNAMENT

- » 30/36 Ton Carbon
- » Lowrider Guides
- » OPP Okuma Wrap
- » Natural Cork With Eva Grip

### TECH SPECS:

CODE	LENGTH	WEIGHT	CASTING WT	TEST CURVE	SECTIONS
LBT-S-1002	10'0"	-	20-85g	3.3lbs	2PC
LBT-S-1202	12'0"	-	25-100g	3.5lbs	2PC
LBT-S-1262	12'6"	-	30-105g	3.6lbs	2PC
LBT-S-1302	13'0"	-	30-115g	3.7lbs	2PC



## CUSTOM BLACK

- » 24t Carbon Blank
- » Heavy Duty Okuma Graphite Reel Seat
- » Ergonomic Shaped Eva With Durable
- » Shrink Tube Handle
- » Supplied In a Quality Rod Bag

### TECH SPECS:

CODE	LENGTH	WEIGHT	CASTING WT	TEST CURVE	SECTIONS
CB-S-802-30	8'0"	-	-	3.0lb	2PC
CB-S-1002-30	10'0"	-	-	3.0lb	2PC
CB-S-1202-35	12'0"	-	-	3.5lb	2PC
CB-S-1202-50	12'0"	-	-	5.0lb	2PC



## 8K SPECIMEN CARP NEW FOR 2021

The NEW 8K Carp Rod features a slim, light and powerful 40T Toray carbon blank construction, Fuji DPS pate reel seat, slim and ergonomically shaped EVA with durable shrink tube butt handle.

- » 40T Toray carbon material, slim, light and powerful blank construction
- » Black stainless steel frame guides with SIC inserts
- » Fuji DPS pate reel seat
- » Okuma carbon line clip
- » Slim and Ergonomic shape EVA with durable shrink tube butt handle
- » Engraved aluminum butt cap
- » High quality cloth bag



### TECH SPECS:

CODE	LENGTH	WEIGHT	TEST CURVE	SECTIONS
8K-CA-1002-325	10'0"	213g	3.25lbs	2PC
8K-CA-1202-35	12'0"	290g	3.5lbs	2PC



## BASS TRAVEL SPINNING



## BASS TRAVEL CASTING



## TIGER TRAVEL SPINNING



## TIGER TRAVEL CASTING



## JIG &amp; POPPING TRAVEL SPINNING



## SURF SPIN TRAVEL



## NOMAD TRAVEL SERIES

- 30 Ton carbon blanks for Ultimate Durability
- 4pc Travel friendly rods (Jigging rod is 3pc)
- Fuji Fazlite Anti Tangle guides (Jigging rod has Alconite guides)
- Alps reel seats with locking rings (saltwater models have Alps Aluminium reel seats)
- Supplied in Padded carry case
- 2 x Bass Rods, 2x Tiger Fish Rods, 1 x Jigging Rod

### TECH SPECS:

CODE	LENGTH	TYPE	POWER	ACTION	CASTING WT	SECTIONS	APPLICATIONS
NM-S-704MH	7'0"	Spinning	MH	-	-	4PC	Bass Travel
NM-C-704MH	7'0"	Casting	MH	-	-	4PC	Bass Travel
NM-S-724H	7'2"	Spinning	H	-	-	4PC	Tiger Travel
NM-C-724H	7'2"	Casting	H	-	-	4PC	Tiger Travel
NM-S-7 03H	7'0"	Spinning	H	-	-	3PC	Jig & Popping Travel
NM-S-1004MH	10'0"	Spinning	MH	-	-	4PC	Surf Spin Travel
NM-S-1104H	11'0"	Spinning	H	-	-	4PC	Surf Spin Travel





## CASPIAN

- » FPS graphite reel seat
- » High Quality guides
- » Lightweight
- » Japanese EVA handles
- » 24 Ton 2pc Carbon blank

### TECH SPECS:

CODE	POWER	TYPE	LENGTH	SECTIONS	CASTING WT
750000	-	Spinning	10'0"	2PC	3/4oz
750001	-	Spinning	11'0"	2PC	1-4oz



## MATRIX SPINNING NEW FOR 2021

- » 24 Ton Toray Carbon
- » Sea Guide Guides
- » OPP Okuma Wrap
- » Ultra Responsive tip action
- » Ideal for Shore Slow Jigging
- » Supplied In Velvet Cloth Bag

### TECH SPECS:

CODE	POWER	TYPE	LENGTH	SECTIONS	CASTING WT
MA-S-802MH	MH	Spinning	8'0"	2PC	19-56g
MA-S-1002MH	MH	Spinning	10"	2PC	19-70g
MA-S-1102MH	MH	Spinning	11'0"	2PC	28-84g



## OKUMA RECON NEW FOR 2021 INSHORE SPINNING

- » 30 Ton Toray Carbon
- » Cork Grips
- » Nano Carbon Technology
- » Exposed blank reel seat for ultimate sensitivity
- » Responsive tips for great drop shot lure action
- » Full Cork butt grips
- » Aluminium down locking reel seat hood

### TECH SPECS:

CODE	POWER	TYPE	LENGTH	SECTIONS	LINE RATING	CASTING WT
RECI-S-702M	M	Spinning	7'0"	2PC	8-17lbs	1/4-5/8oz
RECI-S-702MH	MH	Spinning	7'0"	2PC	10-20lbs	1/4-3/4oz
RECI-S-802MH	MH	Spinning	8'0"	2PC	10-20lbs	1/4-3/4oz
RECI-S-802H	H	Spinning	8'0"	2PC	10-30lbs	3/8 - 1oz
RECI-S-862M	M	Spinning	8'6"	2PC	8-17lbs	1/4-5/8oz



## PRO SERIES 3PC TRAVEL SERIES

- » 30-Ton ultra-responsive carbon blank construction
- » Fuji stainless steel guides
- » Fuji DPS graphite reel seat
- » Durable, hard EVA handle with orange trim
- » Supplied in a High quality cloth bag

### TECH SPECS:

CODE	POWER	TYPE	LENGTH	SECTIONS	CASTING WT
750010	H	Spinning	10'0"	3PC	1-3oz
750011	XH	Spinning	11'0"	3PC	2-4oz



## PULSE SHORE JIGGING/ BUCK TAIL RODS

- » Reinforced blank for stronger backbone
- » High quality 46 ton toray carbon construction
- » Fuji k series tangle free guides for better performance
- » Fuji Reel Seat
- » Supplied with travel bag



### TECH SPECS:

CODE	LINE	TYPE	LENGTH	SECTIONS	CASTING WT
PUL-S-803	PE 0.6 - 1	Spinning	8'0"	3PC	7-30G
PUL-S-903	PE 0.6 - 1.2	Spinning	9'0"	3PC	8-40G
PUL-S-1003	PE 0.8 - 1.5	Spinning	10'0"	3PC	10-50G



## ROCK RANGER NEW FOR 2021 SHORT BUTT

- » 24 Ton GT Carbon Technology
- » EVA Grips
- » MCA – Mechanical Casting aid fitted to 10& 11ft models only
- » Okuma Reel Seat
- » Stainless Steel Guide Frame
- » Titanium Oxide Inserts
- » Supplied In Cloth Bag

### TECH SPECS:

CODE	POWER	TYPE	LENGTH	SECTIONS	CASTING WT
RR-SB-802M	M	Spinning	8'0"	2PC	28g
RR-SB-902M	M	Spinning	9'0"	2PC	28-56g
RR-SB-1002M	M	Spinning	10'0"	2PC	28-56g
RR-SB-1102MH	MH	Spinning	11'0"	2PC	28-56g



## OKUMA WAVE POWER SURF SPIN

NEW FOR 2021

- » 24 Ton GT Carbon Technology
- » EVA Grips
- » Mechanical Casting Aid
- » Okuma Reel Seat
- » Stainless Steel Guide Frame
- » Titanium Oxide Inserts
- » Supplied In Cloth Bag

### TECH SPECS:

CODE	POWER	TYPE	LENGTH	SECTIONS	CASTING WT
WP-S-1203H	H	Spinning	12'0"	3PC	56-112g
WP-S-1303XH	XH	Spinning	13'0"	3PC	84-142g
WP-S-1403XH	XH	Spinning	14'0"	3PC	112-168g
WP-S-1503XH	XH	Spinning	15'0"	3PC	142-196g



## AZORES SLIM 3PC

- » 24 Ton, 3pc Carbon
- » MCA – Mechanical Casting Aid (Spinning Models)
- » Anti Tangle Titanium Oxide Guides
- » Okuma Reel Seat
- » Thinner Diameter
- » Fitted with Okuma All weather grip
- » Supplied in Cloth Bag
- » 3 x Spinning, 1 x Casting Models

### TECH SPECS:

CODE	POWER	TYPE	LENGTH	SECTIONS	CASTING WT
AZS-S-1203-35		Spinning	12'0"	3PC	3 - 5oz
AZS-S-1303-46		Spinning	13'0"	3PC	4 - 6oz
AZS-S-1403-57		Spinning	14'0"	3PC	5 - 7oz
AZS-C-1403-57		Casting	14'0"	3PC	5 - 7oz





## PRECISION 3PC

- » 36 TON Carbon Blank
- » Fuji K-Series anti tangle guides with Fazlite ceramic inserts
- » Fitted with an all-weather Okuma Sports grips
- » Supplied in a cloth bag
- » Bionic finger fitted on all models

### TECH SPECS:

CODE	POWER	TYPE	LENGTH	SECTIONS	CASTING WT
PR-S-1203M	M	Spinning	12'0"	3PC	2-4oz
PR-S-1303M	M	Spinning	13'0"	3PC	2-4oz
PR-S-1403M	M	Spinning	14'0"	3PC	3-5oz
PR-S-1403MH-46	MH	Spinning	14'0"	3PC	4-6oz
PR-S-1463M-35	M	Spinning	14'6"	3PC	3-5oz
PR-S-1463H-68	H	Spinning	14'6"	3PC	6-8oz
PR-S-1503MH-36	MH	Spinning	15'0"	3PC	3-6oz
PR-S-1503H-68	H	Spinning	15'0"	3PC	6-8oz





## MAKAIRA BLUE

- » 3PC 40 ton toray hi-modulus carbon rod
- » Supplied in cordura covered tube
- » Fitted with Fuji K-Series Alconite guides
- » Fuji reel seat
- » All spinning models fitted with mechanical casting aid
- » All models fitted with Winn grips

### TECH SPECS:

CODE	POWER	TYPE	LENGTH	SECTIONS	CASTING WT
MKB-S-1203-24		Spinning	12'0"	3PC	2-4oz
MKB-S-1403-35		Spinning	14'0"	3PC	3-5oz
MKB-S-1463-46		Spinning	14'6"	3PC	4-6oz
MKB-S-1463-68		Spinning	14'6"	3PC	6-8oz
MKB-S-1503-79		Spinning	15'0"	3PC	7-9oz
MKB-S-1563-79		Spinning	15'6"	3PC	7-9oz
MKB-S-1363-10		Spinning	13'6"	3PC	10oz
MKB-C-1203-24		Casting	12'0"	3PC	2-4oz
MKB-C-1363-10		Casting	13'6"	3PC	10oz
MKB-C-1463-79		Casting	14'6"	3PC	7-9oz



## SLX DRONE RODS

- » ALPS reel seat
- » Fuji alconite guides
- » 30 Ton toray carbon blank
- » Fitted with Original Winn Grips
- » Gimbal on butt
- » Supplied in a soft shell carry case with Zip

### TECH SPECS:

CODE	POWER	TYPE	LENGTH	SECTIONS	APPLICATION
SLX-C-1203H	H	Casting	12'0"	3PC	Edibles
SLX-C-1203XH	XH	Casting	12'0"	3PC	Shark
SLX-C-1204XH	XH	Casting	12'0"	4PC	Shark
SLX-C-1203XXH	XXH	Casting	12'0"	3PC	Xtreme







## AIREAL

The Aireal rods from Okuma are ideal for Paddle Ski, Boat and LTB applications. They feature Okuma's new UFR Technology. Okuma's unidirectional fiber reinforcement (UFR) technology is a breakthrough design in rod strength and sensitivity. This patented manufacturing process utilizes an outer layer of longitudinal fibers around the rod blank to significantly increase the rod strength and power in the tip section. These fibers increase the rod's lifting power and maximum strength of the rod by up to three times that of a standard rod blank. The end result is an extremely powerful and durable rod angler can fish with confidence.

### TECH SPECS:

CODE	POWER	TYPE	LENGTH	SECTIONS	CASTING WT
AR-C-601MH	MH	Casting	6'0"	1PC	14-22lb
AR-S-601MH	MH	Spinning	6'0"	1PC	14-22lb



## UTG SABIKI

- » Reduces tangles and simplifies sabiki storage
- » Improved design features including line feeder and tip feeder
- » Two piece design with butt join
- » Additional length to suit more sabiki brands
- » Quality components and EVA grip



### TECH SPECS:

CODE	POWER	TYPE	LENGTH	SECTIONS	CASTING WT
UTG-732SBK	-	-	7'3"	1	-
UTG-732SBKw	-	-	7'3"	1	-



## AZORES BOAT

- » Super strong composite blank
- » DPS reel seat
- » S/Steel frame guides with ceramic insert
- » Supplied in a cloth bag

### TECH SPECS:

CODE	POWER	TYPE	LENGTH	SECTIONS	CASTING WT
AZ-S-701MH	MH	Spinning	7'0"	1PC	110-240g



## SLX BOAT

- » Composite blank construction
- » Heavy duty double foot guide frame
- » ALPS roller guides (for roller tip and roller guide models)
- » EVA Grips – foregrip feature flat top face for better grip
- » Machined aluminium gimbal with EVA cap
- » Supplied in a cloth bag

### TECH SPECS:

CODE	POWER	TYPE	LENGTH	SECTIONS	GUIDE
SLX-C-701MH	MH	CASTING	7'0"	1PC	Power Guide
SLX-C-561MH-15	MH	CASTING	5'6"	1PC	Power Guide
SLX-C-561H-24	H	CASTING	5'6"	1PC	Power Guide
SLX-C-561H-24	H	CASTING	5'6"	1PC	Roller Tip
SLX-C-58H37R	H	CASTING	5'8"	1PC	Roller Guide



## SLX ELITE BOAT

- » Fuji new concept lighter and stronger guides
- » New Slim Fuji O-Ring guide insert
- » Deep pressed concept frame
- » Composite Carbon Rod Construction
- » Fuji reel seat
- » Fast dry mesh rod bag
- » EVA grips



### TECH SPECS:

CODE	POWER	TYPE	LENGTH	SECTIONS	LINE WT
SLXE-B-661-20	-	-	6'6"	1PC	10-20kg
SLXE-B-701-30	-	-	7'0"	1PC	15-30kg
SLXE-B-701-40	-	-	7'0"	1PC	20-40kg
SLXE-B-802-30	-	-	8'0"	2PC	15-30kg



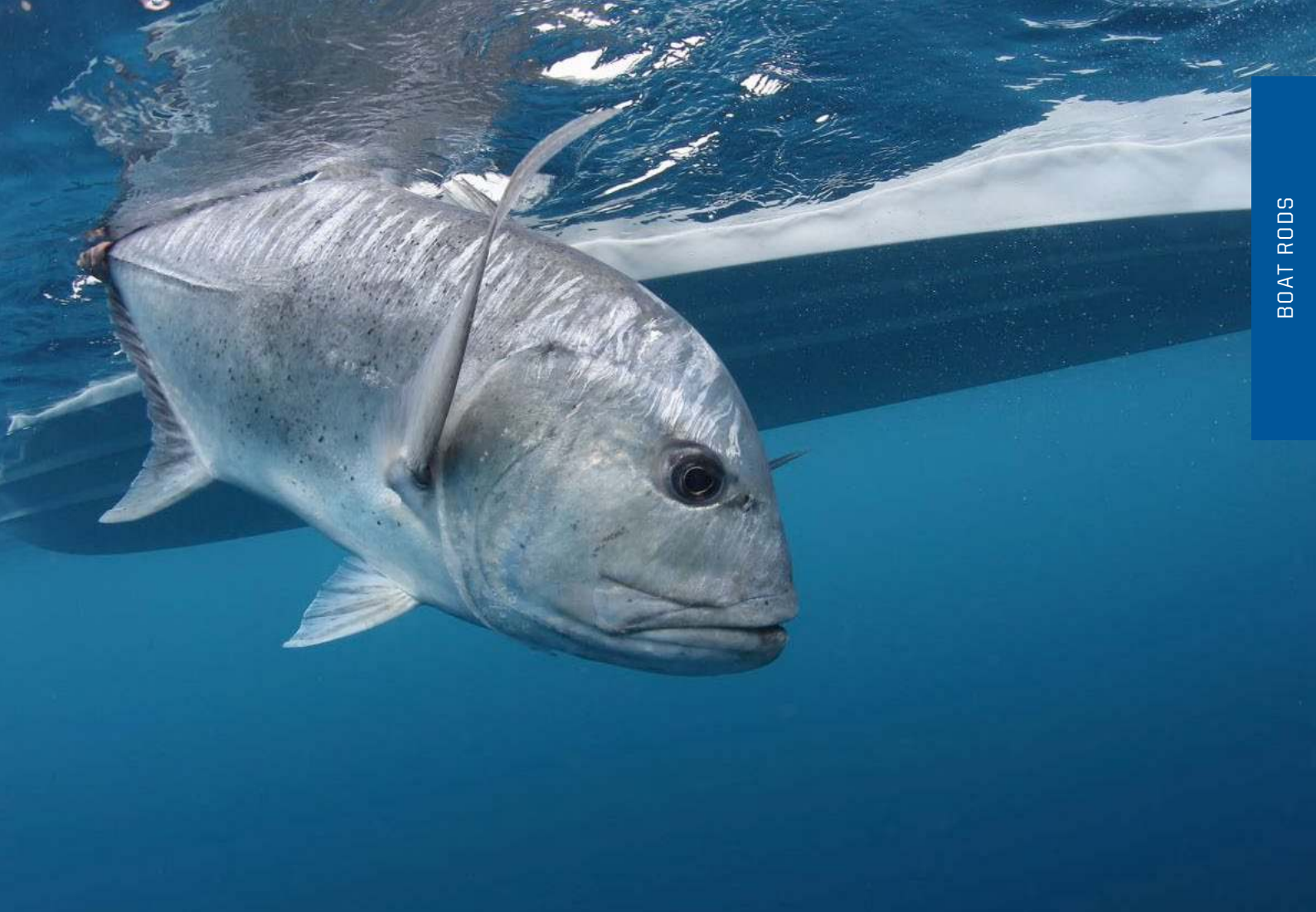
## METALOID SLOW JIGGING

- » Fitted with Fuji Alconite K-Series Guides
- » Fuji Reel Seat
- » Fast dry mesh rod bag
- » Okuma special blank design to improve strength
- » Gimbal design butt caps

### TECH SPECS:

CODE	POWER	TYPE	LENGTH	SECTIONS	CASTING WT
MTL-S-682M	M	Spinning	6'8"	2PC	20-9g
MTL-C-682M	M	Spinning	6'8"	2PC	60-140g





## METALOID JIGGING

- » Fitted with Fuji Alconite K-Series Guides
- » Fuji Reel Seat
- » Fast dry mesh rod bag
- » Okuma special blank design to improve strength
- » Gimbal design butt caps

### TECH SPECS:

CODE	POWER	TYPE	LENGTH	SECTIONS	CASTING WT
MTL-S-662MH	MH	Spinning	6'6"	2PC	
MTL-C-702H	H	Casting	7'0"	2PC	
MTL-S-702H	H	Spinning	7'0"	2PC	
MTL-S-602XH	XH	Spinning	6'0"	2PC	



## METALOID FLICKSTICK

- » Fitted with Fuji K-Series Guides
- » Fuji Reel Seat
- » Fast dry mesh rod bag
- » Okuma special blank design to improve strength
- » Gimbal design butt caps

### TECH SPECS:

CODE	POWER	TYPE	LENGTH	SECTIONS	CASTING WT
MTL-S-802H	H	Spinning	8'0"	2PC	-



## METALOID POPPING

- » Fitted with Fuji Alconite K-Series Guides
- » Fuji Reel Seat
- » Fast dry mesh rod bag
- » Okuma special blank design to improve strength
- » Gimbal design butt caps

### TECH SPECS:

CODE	POWER	TYPE	LENGTH	SECTIONS	CASTING WT
MTL-S-822H	H	Spinning	8'2"	2PC	100 - 200g





## PCH BOAT & SHORE POPPING

- » Extremely light weight and responsive 24-ton carbon rod blanks
- » UFR®-II: Ultimate Flex Reinforcement rod tip technology
- » 3K-woven carbon outer blank wrap improves hoop strength
- » MH and H models feature Fuji K-guides with Alconite inserts
- » XH models feature ALPS HXN guides with Zirconium inserts
- » All models feature machined aluminum ALPS CAH reel seats
- » All PCH models feature ALPS non-skid rubber butt caps



### TECH SPECS:

CODE	POWER	TYPE	LENGTH	SECTIONS	APPLICATION
PCH-S-701MH	MH	SPINNING	7'0"	1PC	BOAT
PCH-S-1003XH	XH	SPINNING	10'0"	3PC	SHORE POPPING



## TESORO SPEED JIGGING

- » Reinforced Blank For Stronger Backbone
- » High Quality 40 Ton Toray Carbon Construction
- » Fuji K Series Tangle Free Guides For Better Performance
- » Guides Fitted With Alconite Rings Fuji Reel Seat
- » Supplied With Travel Bag

### TECH SPECS:

CODE	POWER	TYPE	LENGTH	SECTIONS	CASTING WT
TSR-C-632MH	MH	Casting	6'3"	2PC	90-150g



## MAKAIRA POPPING

- » High Quality 46 Ton Toray Carbon Construction
- » Fuji K Series Tangle Free Guides For Better Performance
- » Guides Fitted With Alconite Rings
- » High Quality Fuji Reel Seat
- » Supplied With Travel Bag
- » Ideal For Monster Tuna And Giant Gt's

### TECH SPECS:

CODE	POWER	TYPE	LENGTH	SECTIONS	CASTING WT
MK-S-792MH	MH	Spinning	7'9"	2PC	100 - 160g
MK-S-812H	H	Spinning	8'2"	2PC	140 - 200g





## MAKAIRA BOAT RODS

- » Carbon composite rod blank technology
- » Custom ALPS aluminum reel seats
- » IGFA tournament rods with full straight or bent aluminum rod butts
- » ALPS roller guides on trolling rods with large knot clearance
- » Aluminum gimbals on trolling Rods
- » Custom leather wrapped fore grip on IGFA Stand Up rods

## MAKAIRA STAND UP

### TECH SPECS:

CODE	POWER	TYPE	LENGTH	SECTIONS	LINE WT
MAK581R-30S	MH	-	5'8"	1PC	30lbs
MAK581R-50S	H	-	5'8"	1PC	50lbs
MAK581R-80S	XH	-	5'8"	1PC	80lbs

## MAKAIRA BENT BUTT

### TECH SPECS:

CODE	POWER	TYPE	LENGTH	SECTIONS	LINE WT
MAK5101R-50B	H	-	5'10"	1PC	50lbs
MAK5101R-80B	XH	-	5'10"	1PC	80lbs
MAK5101R-130B	XXH	-	5'10"	1PC	130lbs

## MAKAIRA BENT BUTT ELECTRIC

### TECH SPECS:

CODE	POWER	TYPE	LENGTH	SECTIONS	LINE WT
MK-B-801XH	XH	-	8'0"	1PC	-



## CASCADE

- » Multi-disc, oiled felt drag system
- » 1 ball bearing for ultimate smoothness
- » Multi-stop anti-reverse system
- » Silver electroplated ABS spool
- » Corrosion-resistant graphite body
- » Corrosion-resistant, stainless steel bail wire
- » RESII: Computer balanced Rotor Equalizing System



### TECH SPECS:

CODE	GEAR RATIO	BEARINGS	WEIGHT (G)	LINE RETRIEVE	MAX DRAG	MONOFILAMENT LINE CAPACITY ( DIAMETER IN MM)
CA-25	5.0:1	1BB	215g	64.5cm	3kg	0.15/320, 0.20/190, 0.25/120
CA-30	5.0:1	1BB	215g	64.5cm	5kg	0.20/220, 0.25/140, 0.30/100
CA-40	5.0:1	1BB	250g	76.2cm	5kg	0.25/270, 0.30/190, 0.35/140
CA-55	4.5:1	1BB	365g	76.2cm	9kg	0.30/390, 0.35/285, 0.40/220
CA-65	4.8:1	1BB	560g	94.0cm	11kg	0.35/360, 0.40/280, 0.50/170
CA-80	4.8:1	1BB	586g	104.1cm	12kg	0.45/280, 0.50/225, 0.55/190
CAP-40	5.0:1	1BB	250g		5kg	0.25/270, 0.30/190, 0.35/140

## ARIA

- » Multi-disc, Japanese oiled felt drag washers
- » 1 ball bearing drive for smoothness and durability
- » Precision machine cut brass pinion gear
- » Corrosion resistant graphite body and rotor
- » CFR: Cyclonic Flow Rotor technology
- » Machined aluminum, anodized spool
- » Corrosion-resistant stainless steel bail wire
- » RESII: Computer balanced Rotor Equalizing System



### TECH SPECS:

CODE	GEAR RATIO	BEARINGS	WEIGHT (G)	LINE RETRIEVE	MAX DRAG	MONOFILAMENT LINE CAPACITY ( DIAMETER IN MM)
ARIA-20sv	4.8:1	1BB	183g	61cm	5kg	0.15/250, 0.20/140, 0.25/90
ARIA-30sv	5.0:1	1BB	220g	71cm	7kg	0.20/300, 0.25/200, 0.30/130
ARIA-40sv	5.0:1	1BB	234g	85cm	8kg	0.25/260, 0.30/180, 0.35/130
ARIA-55sv	4.5:1	1BB	375g	83cm	14kg	0.30/300, 0.35/220, 0.40/170



# AZAKI

NEW FOR 2021

- » Corrosion-resistant graphite body
- » CFR : Cyclonic Flow Rotor
- » 1 ball bearing + 1 roller bearing
- » Quick-Set infinite anti-reverse system
- » Machine cut brass pinion
- » Aluminum spool
- » RES II : Computer balanced Rotor Equalizing System
- » Design graphite handle
- » ABS handle knob (T-shape on size 55 & 65)
- » Multi-disc, Japanese oiled felt drag washers



## TECH SPECS:

CODE	GEAR RATIO	BEARINGS	WEIGHT (G)	LINE RETRIEVE	MAX DRAG	MONOFILAMENT LINE CAPACITY ( DIAMETER IN MM)
Azaki-20	4.8:1	1BB+1RB	187g	61cm	5kg	0.15/250, 0.20/140, 0.25/90
Azaki-30	5.0:1	1BB+1RB	216g	71cm	7kg	0.20/300, 0.25/200, 0.30/130
Azaki-40	5.0:1	1BB+1RB	242g	85cm	8kg	0.25/260, 0.30/180, 0.35/130
Azaki-55	4.5:1	1BB+1RB	404g	83cm	14kg	0.30/300, 0.35/220, 0.40/170
Azaki-65	4.5:1	1BB+1RB	405g	87cm	14kg	0.40/220, 0.45/170, 0.50/140

# REVENGER PRO

- » Durable construction
- » 3bb bearing drive system
- » Aluminium spool
- » Rigid metal handle design for strength
- » RESII : computer balanced rotor equalizing system
- » Even flow roller



## TECH SPECS:

CODE	GEAR RATIO	BEARINGS	WEIGHT (G)	LINE RETRIEVE	MAX DRAG	MONOFILAMENT LINE CAPACITY ( DIAMETER IN MM)
RVPX-30	5.0:1	3BB	-	-	-	0.20/260, 0.25/170, 0.30/120
RVPX-40	5.0:1	3BB	-	-	-	0.25/310, 0.30/220, 0.35/160
RVPX-55	4.5:1	3BB	-	-	-	0.30/310, 0.35/230, 0.40/180
RVPX-65	4.8:1	3BB	-	-	-	0.40/260, 0.45/205, 0.50/170
RVPX-80	4.8:1	3BB	-	-	-	0.25/310, 0.30/220, 0.35/160

# SAFINA

NEW FOR 2021

- » Corrosion-resistant graphite body
- » CFR : Cyclonic Flow Rotor
- » 1 ball bearings + 1 roller bearing
- » Quick-Set infinite anti-reverse system
- » Machine cut brass pinion
- » Precision elliptical oscillation
- » ESII : Computer balanced Rotor Equalizing System
- » Multi-disc, Japanese oiled felt drag washers
- » Rigid Handle Design
- » 2 tone aluminum spool
- » Power handle knob from size 8000 and up



**TECH SPECS:**

CODE	GEAR RATIO	BEARINGS	WEIGHT (G)	LINE RETRIEVE	MAX DRAG	MONOFILAMENT LINE CAPACITY ( DIAMETER IN MM)
SN-3000	5.0:1	1+1BB	-	66cm	7kg	0.20/265, 0.25/170, 0.30/115
SN-4000	5.0:1	1+1BB	281g	76cm	8kg	0.25/260, 0.30/180, 0.35/135
SN-6000	4.5:1	1+1BB	398g	79cm	15kg	0.30/275, 0.35/200, 0.40/155
SN-8000	4.8:1	1+1BB	570g	97cm	16kg	0.40/210, 0.45/165, 0.50/135
SN-14000	4.8:1	1+1BB	598g	109cm	16kg	0.40/370, 0.45/290, 0.50/230

# JAW

- » Multi-disc, Japanese oiled felt drag washers
- » 3 ball bearing+1 roller bearing
- » Precision machine cut brass pinion gear
- » Corrosion resistant graphite body and rotor
- » CFR: Cyclonic Flow Rotor technology
- » Machined aluminum, anodized spool
- » Corrosion-resistant stainless steel bail wire
- » RESII: Computer balanced Rotor Equalizing System



**TECH SPECS:**

CODE	GEAR RATIO	BEARINGS	WEIGHT (G)	LINE RETRIEVE	MAX DRAG	MONOFILAMENT LINE CAPACITY ( DIAMETER IN MM)
JAW-30	5.0:1	3BB+1RB	233g	71cm	7kg	0.20/300, 0.25/200, 0.30/130
JAW-40	5.0:1	3BB+1RB	259g	85cm	8kg	0.25/260, 0.30/180, 0.35/130
JAW-55	4.5:1	3BB+1RB	422g	83cm	14kg	0.30/300, 0.35/220, 0.40/170



## BLUE DIAMOND

- » Multi Disc, Japanese oiled felt drag system
- » Quick-Set anti reverse roller bearing
- » Precision machine cut brass pinion gear
- » Corrosion-resistant graphite body
- » Precision Elliptical Gearing System
- » Machined Aluminium, 2-tone anodized spool
- » RESII: Rotor Equalizing System
- » Metal Handle with EVA Knob (BDS-65 has Power Knob)
- » LCS Line Control Spool



### TECH SPECS:

CODE	GEAR RATIO	BEARINGS	WEIGHT (G)	LINE RETRIEVE	MAX DRAG	MONOFILAMENT LINE CAPACITY ( DIAMETER IN MM)
BDS-30	5.0:1	5BB+1RB	228g			
BDS-40	5.0:1	5BB+1RB	282g			
BDS-55	4.5:1	5BB+1RB	214g			
BDS-65	4.8:1	5BB+1RB	605g			

## TOMCAT

- » Corrosion-resistant graphite body
- » 6 ball bearings + 1 roller bearing
- » Quick-Set infinite anti-reverse system
- » Machine cut brass pinion
- » Precision elliptical oscillation
- » Multi-disc, Japanese oiled felt drag washers
- » DFD : Dual Force Drag on size 14000
- » RES II : Computer balanced Rotor Equalizing System - Design rigid handle
- » Design rigid handle
- » TPE Ergo grip handle knob
- » 2 tones aluminum spool
- » Metal round line clip



### TECH SPECS:

CODE	GEAR RATIO	BEARINGS	WEIGHT (G)	LINE RETRIEVE	MAX DRAG	MONOFILAMENT LINE CAPACITY ( DIAMETER IN MM)
TMC-4000	5.0:1	6BB+1RB	301g	76cm	8kg	0.25/260, 0.30/180, 0.35/135
TMC-6000	4.5:1	6BB+1RB	445g	79cm	15kg	0.30/275, 0.35/200, 0.40/155
TMC-8000	4.8:1	6BB+1RB	631g	97cm	16kg	0.40/210, 0.45/165, 0.50/135
TMC-14000	4.8:1	6BB+1RB	687g	109cm	18kg	0.40/370, 0.45/290, 0.50/230
TMC-16000	4.8:1	6BB+1RB	668g	109cm	16kg	0.40/420, 0.45/335, 0.50/270

# CEYMAR

- » Multi-disc, oiled felt drag system
- » 7 BB + 1RB for ultimate smoothness
- » Quick-Set anti-reverse roller bearing
- » Precision machine cut brass pinion gear
- » Corrosion-resistant graphite body
- » Rigid, forged zinc, black anodized handle design
- » Light weight, EVA handle knobs for comfort
- » C-65 - models feature ergo grip handle style
- » Precision Elliptical Gearing system
- » Machined aluminum, 2-tone anodized spool
- » Heavy duty, solid aluminum bail wire
- » RESII: Computer balanced Rotor Equalizing System
- » Narrow Blade Body Design for reduced fatigue
- » Line control system on the spool for better line-lay



### TECH SPECS:

CODE	GEAR RATIO	BEARINGS	WEIGHT (G)	LINE RETRIEVE	MAX DRAG	MONOFILAMENT LINE CAPACITY ( DIAMETER IN MM)
C-10	5.0:1	6BB+1RB	170g	55.4cm	3kg	0.10/260, 0.14/150, 0.16/115
C-20	5.0:1	6BB+1RB	190g	61cm	3kg	0.15/250, 0.20/140, 0.25/90
C-30	5.0:1	7BB+1RB	232g	65.5cm	7kg	0.20/200, 0.25/130, 0.30/100
C-40	5.0:1	7BB+1RB	283g	76.2cm	8kg	0.25/240, 0.30/170, 0.35/125
C-55	4.5:1	7BB+1RB	403g	79cm	15kg	0.30/325, 0.35/240, 0.40/185
C-65	4.8:1	7BB+1RB	586g	97.3cm	16kg	0.35/340, 0.40/260, 0.50/160
C-30s	6.2:1	7BB+1RB	226g	84cm	7kg	0.20/260, 0.25/170, 0.30/120
C-40s	6.2:1	7BB+1RB	298g	97.4cm	8kg	0.25/290, 0.30/200, 0.35/150

# EPIXOR XT

- » TCA™: C40x carbon TORSION CONTROL ARMOR® reduces twisting
- » Multi-disc, Japanese oiled felt drag washers
- » 7BB+1RB stainless steel bearings
- » Quick-Set ant-reverse bearing
- » Precision machine cut brass pinion gear
- » Slow oscillation system for improved line lay
- » Corrosion resistant graphite body and rotor
- » CFR: Cyclonic Flow Rotor technology
- » Rigid metal handle design for strength
- » Machined aluminum, 2-tone anodized spool with LCS lip
- » Heavy duty solid aluminum bail wire
- » RESII: Computer balanced Rotor Equalizing System



### TECH SPECS:

CODE	GEAR RATIO	BEARINGS	WEIGHT (G)	LINE RETRIEVE	MAX DRAG	MONOFILAMENT LINE CAPACITY ( DIAMETER IN MM)
EPXT-30	5.0:1	7BB+1RB	249g	69cm	8kg	0.20/300, 0.25/200, 0.30/130
EPXT-40	5.0:1	7BB+1RB	304g	76cm	10kg	0.25/260, 0.30/180, 0.35/130
EPXT-55	5.0:1	7BB+1RB	316g	87cm	12kg	0.30/300, 0.35/220, 0.40/170



## HELIOS

- » Light weight C-40X carbon frame and sideplates
- » C-40X Cyclonic Flow Rotor for corrosion resistance
- » TCA™: TORSION CONTROL ARMOR® reduces twisting
- » 8HPB + 1RB corrosion resistant stainless steel bearings
- » Quick-Set anti-reverse roller bearing
- » Precision machine cut brass pinion gear
- » ALG: Precision AlumiLite alloy main gear and oscillating gears
- » Rigid, machined aluminum, anodized handle
- » Light weight, EVA handle knobs for comfort
- » Precision Elliptical Gearing system
- » Machined aluminum, 2-tone anodized spool
- » Heavy duty, solid aluminum bail wire
- » RESII: Computer balanced Rotor Equalizing System
- » LCS line control spool



### TECH SPECS:

CODE	GEAR RATIO	BEARINGS	WEIGHT (G)	LINE RETRIEVE	MAX DRAG	MONOFILAMENT LINE CAPACITY ( DIAMETER IN MM)
HSX-20	5.0:1	8HPB + 1RB	180g	60.7cm	3kg	0.15/240, 0.20/140, 0.25/90
HSX-30	5.0:1	8HPB + 1RB	202g	68.6cm	6kg	0.20/300, 0.25/200, 0.30/130
HSX-40S	5.8:1	8HPB + 1RB	260g	91.2cm	6kg	0.25/260, 0.30/180, 0.35/130



## ITX NEW FOR 2021

- » Lightweight and rigid C-40X carbon body, sideplates and rotor
- » Multi-disc, carbon fiber drag system with Hydro Block gasket
- » 7HPB+1RB High Performance, grease packed bearings
- » Quick-Set anti-reverse roller bearing
- » CFR: Cyclonic Flow Rotor Technology
- » Machined aluminum screw in handle design
- » TGT Grip: Traction Grip Technology
- » High speed 6.0:1 gear ratio on all models
- » Precision machine cut brass pinion gear
- » Machined aluminum, 2-tone anodized aluminum spool
- » Durable 1-pcs solid aluminum, anodized bail wire
- » RESII: Computer balanced Rotor Equalization System



### TECH SPECS:

CODE	GEAR RATIO	BEARINGS	WEIGHT (G)	LINE RETRIEVE	MAX DRAG	MONOFILAMENT LINE CAPACITY ( DIAMETER IN MM)
ITX-2500H	6.0:1	7+1BB	235g	85cm	8kg	0.20/250, 0.25/165, 0.30/110
ITX-3000H	6.0:1	7+1BB	235g	85cm	8kg	0.20/300, 0.25/200, 0.30/130
ITX-4000H	6.0:1	7+1BB	285g	94cm	10kg	0.25/260, 0.30/180, 0.35/130

# ATOMIC CARP

NEW FOR 2021

- » Corrosion resistant graphite body and rotor
- » Multi-stop anti-reverse system
- » Aluminum anodized spool
- » Multi-disc, Japanese oiled felt drag washers
- » RESII: Computer balanced Rotor Equalizing System
- » EFR II : Even Flow Line Roller
- » ABS T-shape handle knob



## TECH SPECS:

CODE	GEAR RATIO	BEARINGS	WEIGHT (G)	LINE RETRIEVE	MAX DRAG	MONOFILAMENT LINE CAPACITY ( DIAMETER IN MM)
ATC-7000	4.5:1	3BB	590g	103cm	15kg	0.33/370, 0.35/325, 0.38/270

# X SPOT

- » 2 Stainless steel bearings
- » Quick-Set anti reverse one way bearing
- » Machine cut anodized aluminum spool
- » 3 metal line-clips
- » Regular aluminum handle with T-shape knob
- » Line control system on the spool provides better line-lay
- » Even flow roller
- » Worm shaft transmission system



## TECH SPECS:

CODE	GEAR RATIO	BEARINGS	WEIGHT (G)	LINE RETRIEVE	MAX DRAG	MONOFILAMENT LINE CAPACITY ( DIAMETER IN MM)
X-SPOT	5.1:1	2BB+1RB	570g	128.3cm	8kg	0.25/820, 0.30/575, 0.35/430, 0.40/330



# INCEPTION

NEW FOR 2021

- » Compact body
- » Long Stroke spool 30mm
- » Corrosion-resistant graphite body
- » 3 ball bearing + 1 roller bearing
- » Quick Set infinite anti-reverse system
- » Machine cut aluminum spool
- » 2 round metal line clips
- » Rigid metal handle with wooden knob
- » Worm shaft oscillation system
- » Machined cut brass pinion gear
- » Heavy duty, solid aluminum bail wire
- » RESII: Computer-balanced rotor system
- » Even Flow line roller
- » Rotor brake system
- » Fast progressive drag



**TECH SPECS:**

CODE	GEAR RATIO	BEARINGS	WEIGHT (G)	LINE RETRIEVE	MAX DRAG	MONOFILAMENT LINE CAPACITY ( DIAMETER IN MM)
INC-6000	5.3:1	3+1BB	460g	104cm	12kg	0.30/370, 0.33/300, 0.35/270
INC-8000	5.3:1	3+1BB	533g	123cm	16kg	0.33/440, 0.35/385, 0.38/320

# CUSTOM BLACK

- » 3 +1 stainless steel bearings
- » Quick-Set anti-reverse roller bearing
- » Machine cut anodizing alum spool
- » Aluminum regular handle
- » Hydro block system
- » Even flow roller
- » Worm shaft transmission system
- » LCS line control spool
- » Metal line clip
- » Spare graphite spool



**TECH SPECS:**

CODE	GEAR RATIO	BEARINGS	WEIGHT (G)	LINE RETRIEVE	MAX DRAG	MONOFILAMENT LINE CAPACITY ( DIAMETER IN MM)
CB-60	4.5:1	3BB+1RB	570g	102.9cm	12kg	0.25/515, 0.30/360, 0.35/270, 0.40/210
CB-80	3.8:1	3BB+1RB	690g	92.5cm	15kg	0.40/265, 0.45/210, 0.50/170, 0.55/135



## 8K

- » Quick set anti reverse roller bearing
- » CFR cyclonic flow rotor
- » Long Cast tapered spool
- » Slow oscillation system
- » 5 ball bearing+1 roller bearing
- » Fast drag system
- » Double stainless steel line clickers
- » Precision worm shaft transmission system
- » Rotor brake system
- » Hydro block water tight drag seal
- » With carbon washers
- » Precision zinc handle arm with wooden knob



### TECH SPECS:

CODE	GEAR RATIO	BEARINGS	WEIGHT (G)	LINE RETRIEVE	MAX DRAG	MONOFILAMENT LINE CAPACITY ( DIAMETER IN MM)
8K	4.7:1	5BB+1RB	743g	108cm	18kg	0.33/620, 0.35/550, 0.38/470

## SURF 8K

- » Quick set anti reverse roller bearing
- » CFR cyclonic flow rotor
- » Long Cast tapered spool
- » Slow oscillation system
- » Fast drag system
- » Double stainless steel line clickers
- » Precision worm shaft transmission system
- » Rotor brake system
- » Hydro block water tight drag seal
- » With carbon washers
- » Precision zinc handle arm with TPE ergo grip



### TECH SPECS:

CODE	GEAR RATIO	BEARINGS	WEIGHT (G)	LINE RETRIEVE	MAX DRAG	MONOFILAMENT LINE CAPACITY ( DIAMETER IN MM)
SURF-8K	4.7:1	5BB+1RB	763g	108cm	18kg	0.33/620, 0.35/550, 0.38/470

# AZORES XP NEW FOR 2021

- » DFD: Precision Dual Force Drag system
- » Precision click drag adjustment for more precise settings
- » Multi-disc, Carbonite and felt drag washers for DFD
- » 6HPB + 1RB corrosion resistant stainless steel bearings
- » Quick-Set anti-reverse roller bearing plus ratchet system
- » Dual anti-reverse system for maximum security
- » Azores-40 size only features the Quick-Set anti-reverse function
- » Precision machine cut brass pinion gear
- » CRC: Corrosion-resistant coating process
- » HDGII: Corrosion-resistant, High density gearing
- » ALC: Rigid diecast aluminum body, sideplate and rotor
- » MSS: carbon Mechanical Stabilizing System
- » Machined aluminum, 2-tone anodized spool with LCS lip
- » Machined aluminum handle arm for added strength
- » Hydro Block water tight drag seal
- » Heavy duty, solid aluminum bail wire



### TECH SPECS:

CODE	GEAR RATIO	BEARINGS	WEIGHT (G)	LINE RETRIEVE	MAX DRAG	MONOFILAMENT LINE CAPACITY ( DIAMETER IN MM)
ZXP-4000H	5.8:1	6+1BB	335g	91cm	13kg	0.25/290, 0.30/200, 0.35/150
ZXP-6000H	5.8:1	6+1BB	526g	105cm	13kg	0.30/300, 0.35/220, 0.40/170
ZXP-8000H	5.4:1	6+1BB	720g	110cm	20kg	0.40/250, 0.45/200, 0.50/160
ZXP-14000H	5.4:1	6+1BB	738g	120cm	20kg	0.40/370, 0.45/290, 0.50/240
ZXP-16000H	5.4:1	6+1BB	740g	120cm	20kg	0.40/420, 0.45/335, 0.50/270

# AZORES BLUE

- » DFD: Precision Dual Force Drag system
- » Precision click drag adjustment for more precise settings
- » Multi-disc, Carbonite and felt drag washers for DFD
- » 6HPB + 1RB corrosion resistant stainless steel bearings
- » Quick-Set anti-reverse roller bearing plus ratchet system
- » Dual anti-reverse system for maximum security
- » Azores-40 size only features the Quick-Set anti-reverse function
- » Precision machine cut brass pinion gear
- » CRC: Corrosion-resistant coating process
- » HDGII: Corrosion-resistant, High density gearing
- » ALC: Rigid diecast aluminum body, sideplate and rotor
- » MSS: carbon Mechanical Stabilizing System
- » Machined aluminum, 2-tone anodized spool with LCS lip
- » Machined aluminum handle arm for added strength
- » Hydro Block water tight drag seal



### TECH SPECS:

CODE	GEAR RATIO	BEARINGS	WEIGHT (G)	LINE RETRIEVE	MAX DRAG	MONOFILAMENT LINE CAPACITY ( DIAMETER IN MM)
Azores-5500	5.8:1	6BB+1RB	524g	104.6cm	13kg	0.35/250,0.40/190,0.50/125
Azores-6500	5.4:1	6BB+1RB	730g	110.2cm	20kg	0.35/390,0.40/300,0.50/185
Azores-9000	5.4:1	6BB+1RB	750g	120.4cm	20kg	0.45/350,0.50/280,0.55/240



## CEDROS NEW FOR 2021

- » DFD: Precision Dual Force Drag system
- » Multi-disc drag adjustment for more precise settings
- » Rigid and corrosion resistant LITECAST™ construction
- » CRC: Corrosion resistant coating process
- » 6HPB + 1RB corrosion resistant stainless steel bearings
- » Dual anti-reverse: Quick-Set and ratchet system
- » Manual bail trip function for ultimate reliability
- » HDGII: Corrosion resistant, High density gearing
- » Precision machine cut brass pinion gear
- » Machined aluminum, 2-tone anodized spool
- » Machined aluminum, screw-in handle arm



### TECH SPECS:

CODE	GEAR RATIO	BEARINGS	WEIGHT (G)	LINE RETRIEVE	MAX DRAG	MONOFILAMENT LINE CAPACITY ( DIAMETER IN MM)
CJ-4000H	5.8:1	6BB+1RB	380g	90cm	15kg	0.25mm/280, 0.30/185, 0.35/130
CJ-5000H	5.8:1	6BB+1RB	397g	95cm	15kg	0.30mm/240, 0.35/170, 0.40/125
CJ-6000H	5.8:1	6BB+1RB	405g	101cm	15kg	0.30mm/315, 0.35/220, 0.40/165
CJ-8000	5.4:1	6BB+1RB	624g	104cm	20kg	0.40mm/230, 0.45/180, 0.50/140
CJ-10000	5.4:1	6BB+1RB	643g	112cm	20kg	0.40mm/290, 0.45/220, 0.50/175
CJ-14000	5.4:1	6BB+1RB	646g	116cm	20kg	0.40mm/370, 0.45/290, 0.50/230

# SALINA II

- » AlumiLite: Aluminum body and sideplate construction
- » Aluminum rotor construction for strength and precision
- » Precision Elliptical Gearing
- » Quick Set anti-reverse bearing
- » 8BB + 1 RB stainless steel bearings
- » Machined aluminum, 2-tone anodized spool
- » DD: Dual force drag system with carbon washers
- » Hydro Block water tight drag seal
- » HDG I: Corrosion resistant, high density gearing



**TECH SPECS:**

CODE	GEAR RATIO	BEARINGS	WEIGHT (G)	LINE RETRIEVE	MAX DRAG	MONOFILAMENT LINE CAPACITY ( DIAMETER IN MM)
SAII-5000a	4.5:1	8BB+1RB	-	-	-	0.35/260-0.40/200-0.50/120
SAII-8000a	4.5:1	8BB+1RB	-	-	-	0.35/300-0.40/230-0.50/140
SAII-10000a	4.8:1	8BB+1RB	-	-	-	0.35/430-0.40/330-0.50/210
SAII-16000a	4.8:1	8BB+1RB	-	-	-	0.45/330-0.50/270-0.55/220

# METALOID

- » 7+1 HPB Bearings
- » Oversized Dual Force Drag
- » Carbon Drag Washers
- » Mechanical Stabilizing System
- » High Performance Bearings



**TECH SPECS:**

CODE	GEAR RATIO	BEARINGS	WEIGHT (G)	LINE RETRIEVE	MAX DRAG	MONOFILAMENT LINE CAPACITY ( DIAMETER IN MM)
M-55S	5.8:1	7BB+1RB	550g	-	25kg	0.30/320   0.35/230
M-65S	5.4:1	7BB+1RB	770g	-	30kg	0.35/275   0.40/210
M-90S	5.4:1	7BB+1RB	790g	-	30kg	0.30/320   0.35/230



## MAKAIRA

- » Forged aluminum, machine cut body / sideplate.
- » Forged aluminum, machine cut Cyclonc Flow rotor.
- » Forged stainless steel main gear for ultimate power and strength.
- » Precision machine cut 17-4 grade stainless steel pinion gear.
- » Oversized 17-4 grade stainless steel spool shaft reduces flex.
- » Hydro Sealed Body and DFD system for maximum protection.
- » Carbonite high output drag with Cal's drag grease on full DFD.
- » Customized pre-set drag system, works like a lever drag reel.
- » Dual anti-reverse system for maximum strength and reliability.
- » Quick-Set stainless steel German anti-reverse roller bearing.
- » Machined aluminum, 2-tone anodized spool with LCS lip.
- » Machined aluminum screw-in handle arm for added strength.
- » Right and Left handles are designed differently: Order by Rt/Lt.



### TECH SPECS:

CODE	GEAR RATIO	BEARINGS	WEIGHT (G)	LINE RETRIEVE	MAX DRAG	MONOFILAMENT LINE CAPACITY ( DIAMETER IN MM)
MK-1000R	4.9:1	9HPB+1RB	810g	101.6cm	25kg	0.35/380, 0.40/300, 0.45/225
MK-2000RS	5.8:1	9HPB+1RB	997g	131.1cm	30kg	0.45/450, 0.50/370, 0.55/300
MK-3000RS	5.8:1	9HPB+1RB	1107g	166.9cm	3kg	0.55/530, 0.60/450, 0.65/380
						BRAIDED LINE RATING
						415/50, 290/65
						490/65, 400/80
						700/80, 570/100



# CARBONITE NEW FOR 2021

- » Auto-switch freespool system
- » Corrosion-resistant graphite body
- » 1ball bearing +1 roller bearing
- » Quick Set infinite anti-reverse system
- » Multi-disc, oiled felt drag system
- » Graphite painted spool
- » Graphite spare spool
- » S-curve oscillation system
- » Machined cut brass pinion gear
- » RESII: Computer-balanced rotor system
- » Even Flow line roller



### TECH SPECS:

CODE	GEAR RATIO	BEARINGS	WEIGHT (G)	LINE RETRIEVE	MAX DRAG	MONOFILAMENT LINE CAPACITY ( DIAMETER IN MM)
CBBF-4000	5.0:1	1+1BB	285g	79cm	8kg	0.25/250, 0.30/165, 0.35/115
CBBF-5000	4.5:1	1+1BB	396g	79cm	12kg	0.30/275, 0.35/195, 0.40/145

# AK NEW FOR 2021

- » Auto-switch freespool system
- » Corrosion-resistant graphite body
- » 1 ball bearing + 1 roller bearing
- » Quick Set infinite anti-reverse system
- » CFR : Cyclonic Flow Rotor
- » Aluminum spool
- » Design graphite handle
- » ABS knob
- » S-curve oscillation system
- » Machined cut brass pinion gear
- » RESII: Computer-balanced rotor system
- » Even Flow line roller
- » Grapite spare spool



### TECH SPECS:

CODE	GEAR RATIO	BEARINGS	WEIGHT (G)	LINE RETRIEVE	MAX DRAG	MONOFILAMENT LINE CAPACITY ( DIAMETER IN MM)
AK-4000	5.0:1	1BB+1RB	304g	79cm	10kg	0.25/260, 0.30/180, 0.35/130
AK-5000	4.5:1	1BB+1RB	458g	80cm	12kg	0.30/230, 0.35/170, 0.40/130
AK-6000	4.5:1	1BB+1RB	445g	80cm	12kg	0.30/300, 0.35/220, 0.40/170

# BARBARIAN

- » ON/OFF auto trip bait feeder system
- » Multi-disc, Japanese oiled felt drag washers
- » 2BB+1RB stainless steel bearings
- » Quick-Set anti-reverse bearing
- » Precision machine cut brass pinion gear
- » Corrosion resistant graphite body and rotor
- » Machined aluminium spool
- » Heavy duty solid aluminium bail wire
- » RESII: Computer balanced Rotor Equalizing System
- » Aluminium double handle with ABS knobs



### TECH SPECS:

CODE	GEAR RATIO	BEARINGS	WEIGHT (G)	LINE RETRIEVE	MAX DRAG	MONOFILAMENT LINE CAPACITY ( DIAMETER IN MM)
BN-40	5.0:1	2+1BB	351g	30.1"	6.8kg	0.25/290,0.30/200,0.35/150
BNP-40	5.0:1	2+1BB	351g	30.1"	6.8kg	0.25/290,0.30/200,0.35/150
BN-55	4.5:1	2+1BB	464g	31.1"	13.4kg	0.30/300,0.35/220,0.40/170
BNP-55	4.5:1	2+1BB	464g	31.1"	13.4kg	0.30/300,0.35/220,0.40/170

# Longbow XR

- » CFR: Cyclonic flow rotor
- » RESII: Computer balanced rotor equalizing system
- » Precision elliptical gearing system
- » Machined aluminium anodized spool
- » Aluminium spool
- » Spare graphite spool
- » Aluminium double handle
- » Ergonomic eva grips
- » Metal line clip
- » LCS line control spool



### TECH SPECS:

CODE	GEAR RATIO	BEARINGS	WEIGHT (G)	LINE RETRIEVE	MAX DRAG	MONOFILAMENT LINE CAPACITY ( DIAMETER IN MM)
LBXR-540	5.0:1	4+1BB	238g	27"	-	0.25/290, 0.30/200, 0.35/150
LBXR-555	4.5:1	4+1BB	406g	28"	-	0.30/300, 0.35/220, 0.40/170

# CEYMAR XT BAITFEEDER

- » Baitfeeder quick release Aluminum spool
- » Multi-disc, oiled felt drag system
- » 5BB+1BB bearing drive system
- » Quick-Set anti-reverse roller bearing
- » Precision machine cut brass pinion gear
- » Corrosion-resistant graphite body
- » RESII: Computer balanced Rotor Equalizing System
- » Light weight, ABS handle knobs
- » Precision Elliptical Gearing system
- » Machined aluminum, anodized spool
- » Heavy duty, solid aluminum bail wire
- » Metal line clip
- » LCS line control spool
- » Extra Aluminum spool



### TECH SPECS:

CODE	GEAR RATIO	BEARINGS	WEIGHT (G)	LINE RETRIEVE	MAX DRAG	MONOFILAMENT LINE CAPACITY ( DIAMETER IN MM)
CBF-1000	5.0:1	7+1BB	225g	61cm	3kg	0.15/250, 0.2/140, 0.25/90
CBXT-630	5.0:1	5BB+1RB	527g	68.6cm	12kg	0.20/240, 0.25/155, 0.30/110
CBXT-640	5.0:1	5BB+1RB	533g	71.1cm	12kg	0.25/300, 0.30/210, 0.35/155
CBXT-655	4.5:1	5BB+1RB	763g	78.7cm	12kg	0.30/380, 0.35/280, 0.40/215
CBXT-665	4.8:1	5BB+1RB	778g	86.4cm	12kg	0.35/390, 0.40/300, 0.50/185

## LS-6K NEW FOR 2021

- » Auto-switch freespool system
- » Long Stroke spool trip 30mm
- » Corrosion-resistant graphite body
- » Quick Set infinite anti-reverse system
- » CFR : Cyclonic Flow Rotor



### TECH SPECS:

CODE	GEAR RATIO	BEARINGS	WEIGHT (G)	LINE RETRIEVE	MAX DRAG	MONOFILAMENT LINE CAPACITY ( DIAMETER IN MM)
LS-6K	5.3:1	5BB+1RB	530g	104cm	12kg	0.30/370, 0.33/300, 0.35/270



## LS 8K NEW FOR 2021

Okuma LS reels are designed for long casting carp fishing, features on/off auto trip bait feeding system, slow oscillation system with long stroke spool trip 30mm and worm shaft transmission system make casting smoother and longer. Equips with oversized gear and fast progressive drag system in a compact body design to bring anglers better fishing experience.

- » Auto-switch freespool system
- » Long Stroke spool trip 30mm
- » Corrosion-resistant graphite body
- » 5 ball bearing + 1 roller bearing
- » Quick Set infinite anti-reverse system
- » Machine cut aluminum spool
- » Worm shaft oscillation system
- » Machined cut brass pinion gear
- » Heavy duty, solid aluminum bail wire
- » Precision zinc handle arm with wooden handle knob
- » RESII: Computer-balanced rotor system
- » Slow oscillation system for improved line lay
- » 2 round metal line clips
- » Rotor brake system

### TECH SPECS:

CODE	GEAR RATIO	BEARINGS	WEIGHT (G)	LINE RETRIEVE	MAX DRAG	MONOFILAMENT LINE CAPACITY ( DIAMETER IN MM)
LS-8K	5.3:1	5BB+1RB	588g	123cm	16kg	0.33/440, 0.35/385, 0.38/320



## AVENTA

- On/Off auto trip bait feeding system
- 6+1RB bearing drive system for smoothness
- Quick set anti-reverse roller bearing
- Precision machine cut brass pinion gear
- Corrosion resistant graphite body
- Slow oscillation precision gearing system
- Machined aluminum spool
- Metal line clip
- Spare aluminum spool
- One touch handle with wood knob
- LCS Line control spool



### TECH SPECS:

CODE	GEAR RATIO	BEARINGS	WEIGHT (G)	LINE RETRIEVE	MAX DRAG	MONOFILAMENT LINE CAPACITY ( DIAMETER IN MM)
AB-5000	4.8:1	6BB+1RB	527g	27"	12kg	0.35/235, 0.40/180, 0.50/110
AB-6000	4.8:1	6BB+1RB	533g	28"	12kg	0.35/280, 0.40/215, 0.50/135
AB-8000	4.8:1	6BB+1RB	763g	31"	12kg	0.35/405, 0.40/311, 0.50/190
AB-10000	4.8:1	6BB+1RB	778g	34"	12kg	0.45/310, 0.50/250, 0.55/210





## AVENTA PRO

- On/Off auto trip bait feeding system
- 6+1RB bearing drive system for smoothness
- Quick set anti-reverse roller bearing
- Precision machine cut brass pinion gear
- Corrosion resistant graphite body
- Slow oscillation precision gearing system
- Machined aluminum spool
- Metal line clip
- 3 X Spare aluminum spool
- One touch handle with wood knob
- LCS Line control spool



### TECH SPECS:

CODE	GEAR RATIO	BEARINGS	WEIGHT (G)	LINE RETRIEVE	MAX DRAG	MONOFILAMENT LINE CAPACITY ( DIAMETER IN MM)
APB-5000	4.8:1	6BB+1RB	534g	32.5"	12kg	0.30/320, 0.35/230, 0.40/180
APB-6000	4.8:1	6BB+1RB	540g	34.1"	12kg	0.30/375, 0.35/275, 0.40/210

## AIRFRAME

- » Fully adjustable multi-disc Teflon drag system
- » Roller bearing engages drag system in one direction
- » Precision machined stainless steel spool shaft
- » Super lightweight graphite frame construction
- » Corrosion resistant, super large arbor spool design
- » Easy-to-change left to right hand retrieval conversion



### TECH SPECS:

CODE	LINE WEIGHT	BEARINGS	WEIGHT (G)	LINE RETRIEVE	LINE CAPACITY
AF-4/6	4,5,6 wt.	1RB	142g	9"	WF-4, 125yds/20lbs
AF-7/9	7,8,9 wt.	1RB	170g	10"	WF-7, 135yds/20lbs



# CLASSIC

- » Machine cut brass gears
- » Oversize multi-disc drag
- » Oversize star drag for quick adjustments
- » Corrosion resistant graphite frame
- » 2 Sealed ball bearings (CL-452C-A)



## TECH SPECS:

CODE	GEAR RATIO	BEARINGS	WEIGHT (G)	LINE RETRIEVE	MAX DRAG	MONOFILAMENT LINE CAPACITY ( DIAMETER IN MM)
CL-450C-A	40:1	0	461g	43"	7kg	0.45/450, 0.50/360, 0.55/300
CL-452C-A	40:1	2BB	482g	43"	7kg	0.35/270, 0.40/210, 0.45/150

# CLASSIC PRO

- » Lightweight corrosion resistant frame and sideplates
- » Corrosion resistant graphite spools
- » Ported graphite frame design
- » Stainless steel reel foot for strength
- » Dependable multi-disc Rulidium drag system
- » CLX features a bushing drive
- » Aluminum power handle with T-style knobs
- » Self lubricating gear system
- » Stainless steel levelwind line guide system



## TECH SPECS:

CODE	GEAR RATIO	BEARINGS	WEIGHT (G)	LINE RETRIEVE	MAX DRAG	MONOFILAMENT LINE CAPACITY ( DIAMETER IN MM)
CLX-450La	3.8:1	Bushing	441g	25"	6kg	0.45/450, 0.50/360, 0.55/300



## SOLTERRA SLX

- » Stainless steel main gears, pinion gears and shafts
- » 2 thrust bearings reduce handle turning force be over 50%.
- » 5BB+2TB stainless steel shielded bearings 20-50W models
- » 5BB+2TB+RB stainless steel shielded bearings 10/15 models
- » Single speed, High-speed and Two-speed models
- » Durable corrosion-resistant frame & side plates
- » Stainless steel reinforcing side plate rings
- » Forged aluminum spool with line indicator rings
- » Carbonite drag system with Cal's universal drag grease
- » Double dog, silent anti-reverse on all models
- » Dual anti-reverse system on all 10/15 sizes
- » Ratcheting drag lever for precise drag setting
- » T-Bar handle design on 50W-size
- » Ergo Grip comfort handle on all 10 through 30 sizes
- » Low profile On/Off clicker with stainless steel wishbone
- » Wide-mouth levelwind: Stainless steel with Ti coating "L" models
- » High Speed 6.2:1 gear ratios on SLX-15CS
- » Open top frame design on SLX-15CS
- » Stainless Steel Body Armor reduces frame flex 20-50W models



**Standard Single speed Lever Drags (Features closed frame with top cross bar and harness lugs)**

**TECH SPECS:**

**Two-Speed Lever Drags (Features closed frame with top cross bar and harness lugs)**

CODE	GEAR RATIO	BEARINGS	WEIGHT (G)	LINE RETRIEVE	MAX DRAG	MONOFILAMENT LINE CAPACITY ( DIAMETER IN MM)
SLX-20	3.5:1	5BB+2TB	984g	32"	11.8kg - 15kg	0.50/330, 0.55/440, 0.60/370
SLX-30	3.5:1	5BB+2TB	1017g	32"	11.8kg - 15kg	0.50/700, 0.55/580, 0.60/490
SLX-20II	3.8:1 & 1.7:1	5BB+2TB	991g	35" & 15"	11.8kg - 15kg	0.50/530, 0.55/440, 0.60/370
SLX-30II	3.8:1 & 1.7:1	5BB+2TB	1017g	35" & 15"	11.8kg - 15kg	0.50/700, 0.55/580, 0.60/490
SLX-50WII	3.1:1 & 1.3:1	5BB+2TB	1510g	32" & 13"	14.5kg - 18kg	0.70/640, 0.90/380, 1.00/310





## CAVALLA NEW FOR 2021

Okuma Cavalla lever drag reels contain the key concepts of these industry-leading platforms take shape in a more accessible package, radically advancing power and performance available to everyday anglers. The reels are available in 2-speed design, cover the range from vertical jigging to live bait, casting to light trolling for species up to sailfish and yellowfin tuna.

- » Rigid 1-pcs frame and left sideplate construction
- » 6061-T6 Machined aluminum frame and sideplates
- » 17-4 grade stainless steel main and pinion gears
- » Carbonite drag system with Cal's drag grease
- » Cold forged, Type-II anodized, machined aluminum spool
- » CRC: Corrosion Resistant Coating process
- » 4 BB corrosion resistant stainless steel bearings
- » Ergo Grip handle knob with anodized aluminum handle arm
- » Silent retrieve system for cranking smoothness
- » On/Off bait clicker for all lever drag models



### TECH SPECS:

CODE	GEAR RATIO	BEARINGS	WEIGHT (G)	LINE RETRIEVE	MAX DRAG	MONOFILAMENT LINE CAPACITY ( DIAMETER IN MM)
CAV-5NS	6.4:1	4BB	440g	107cm	7 & 11kg	0.32/385, 0.37/275, 0.42/225
CAV-5NII	6.4:1 & 3.8:1	4BB	460g	107 & 63cm	7 & 11kg	0.32/385, 0.37/275, 0.42/225
CAV-12NII	4.7:1 & 2.1:1	4BB	675g	90 & 40cm	12.2 & 15.4kg	0.42/300, 0.48/200, 0.55/150
CAVB-5NII	6.4:1 & 3.8:1	4BB	460g	07 & 63cm	7 & 11kg	0.32/385, 0.37/275, 0.42/225
CAVB-12NII	4.7:1 & 2.1:1	4BB	675g	90 & 40cm	12.2 & 15.4kg	0.42/300, 0.48/200, 0.55/150





## MAKAIRA

- » 6061-T6 machined aluminum frame with forged side plates
- » 17-4 grade stainless steel gearing
- » Helical cut gears for increased torque, smoothness and improved gear meshing
- » Makaira reels all feature two-speed gearing systems
- » Gold anodized two-speed gear shifter housing
- » Cold forged, Type-II anodized, machined aluminum spool
- » CRC: Corrosion Resistant Coating process
- » Patented spool pin system for use with braided or mono lines
- » Carbonite Dual Force drag system featuring Cal's universal drag grease
- » Custom designed thrust bearing: Alleviates side load on heavy drag settings
- » 4-pcs ABEC-5 precision Sapporo stainless steel ball bearings
- » MK-80WII features 6-pcs of Sapporo ball bearings
- » Double-dog, proprietary silent anti-reverse system
- » Ratcheting drag lever and pre-set knob for precise drag setting
- » Patented T-Bar handle with Easy Roll graphite insert on all models
- » Heavy duty stainless steel ratcheting clicker system
- » Heavy duty, 17-4 grade stainless steel drive and spool shafts
- » Type-II gold anodized frame, sideplates, spool, drag lever and handle
- » Open top frame design on 10II, 15II, 16II, 20II, and 50II
- » Lug and plug system on all open top reel models
- » Machined thumb rest on rear cross bar for improved ergonomics
- » Forged aluminum full hard anodized reel foot and reel clamp
- » Machine-etched marlin logo on left side plate
- » Precision placement of drain holes maximizes water removal from reel
- » Special screw ports around side plate screws reduces water/corrosion buildup



### TECH SPECS:

CODE	GEAR RATIO	BEARINGS	WEIGHT (G)	LINE RETRIEVE	MAX DRAG	MONOFILAMENT LINE CAPACITY (DIAMETER IN MM)
MK-30II	3.8:1 & 1.7:1	4BB + 1TB	1417g	100.1 & 44.5 1cm	16.8 & 25.0 kg	0.55/700, 0.60/640
MK-50WII	3.2:1 & 1.3:1	4BB + 1TB	1843g	96.0 & 38.9 1cm	27.2 & 39.0 kg	0.70/820, 0.75/710
MK-80WII	3.1:1 & 1.2:1	6BB + 1TB	3289g	116.1 & 52.9 1cm	32.1 & 45.4 kg	0.90/910, 1.00/770
MK-130II	2.2:1 & 1.2:1	6BB + 1TB	4750g	100.8 & 55.1cm	34.1 & 45.4 kg	0.90/1450, 1.00/1170







## CEYMAR NEW FOR 2021

- » Corrosion-resistant graphite frame and sideplates
- » A6061-T6 machined aluminum, anodized U-shaped spool
- » Multi-disc composite drag system
- » 5BB+1RB bearing drive system
- » External adjustable magnetic cast control system
- » Quick-Set anti-reverse roller bearing
- » Sideplate access port for quick spool changes
- » Ergonomic handle design allows cranking closer to body



### TECH SPECS:

CODE	GEAR RATIO	BEARINGS	WEIGHT (G)	LINE RETRIEVE	MAX DRAG	MONOFILAMENT LINE CAPACITY ( DIAMETER IN MM)
C100H-A	7.2:1	5+1BB	199g	76cm	5kg	0.31/110, 0.33/100, 0.37/80

## SERRANO NEW FOR 2021

- » Rigid, corrosion resistant frame and sideplate construction
- » 6BB + 1RB precision stainless steel bearing drive system
- » Quick Set anti-reverse bearing for solid hook sets
- » Precision cut, high strength brass main and pinion gears
- » Externally adjustable magnetic cast control system
- » 33.5mm machined aluminum, black anodized spool
- » Multi-disc drags washers for consistent performance
- » Double paddle, 95mm aluminum swept handle arm
- » TGT Grip: Traction Grip Technology



### TECH SPECS:

CODE	GEAR RATIO	BEARINGS	WEIGHT (G)	LINE RETRIEVE	MAX DRAG	MONOFILAMENT LINE CAPACITY ( DIAMETER IN MM)
SRN100H-A	7.2:1	6+1BB	199g	76cm	5kg	0.31/110, 0.33/100, 0.37/80



## HAKAI

NEW FOR 2021

### A NEW ERA TAKES FLITE

The dawn of a new age of bass specific reels has arrived. The Hakai is the most advanced reel the segment has ever seen, bringing a perfect balance of lightness, strength and design.

- » LITECAST™: Magnesium frame with treatment for corrosion resistance
- » FLITE SPOOL™: Spool assay weighs only 9.5g (0.33oz) with bearings that can be used for an ultra-wide casting range
- » FLITE SHAFT™: Patented hollow stainless steel main shaft with precision SUS balls pressed on 2 ends, provides the perfect balance point between weight, strength and smoothness
- » 42mm oversized hardened brass main gear
- » 3 Gear ratio options: 6.2:1 / 7.3:1 / 8.1:1
- » Multi-Disc, stainless-steel and carbon fiber hybrid drag washers for maximum drag output up to 9 kg (20lbs)
- » Universal Line Diameter Indicator: always know what line you spooled on your reel when you pick it up
- » 6BB (4HPB + 2NMB) + 1RB corrosion resistant stainless steel bearings
- » C-40X carbonite star drag
- » 90mm aluminum handle arm with lightweight EVA handle knob



### TECH SPECS:

CODE	GEAR RATIO	BEARINGS	WEIGHT (G)	LINE RETRIEVE	MAX DRAG	MONOFILAMENT LINE CAPACITY ( DIAMETER IN MM)
HDT100-A	6.2:1	6BB+1RB	167g	64cm	9kg	0.31/100, 0.33/90, 0.37/70
HDT100H-A	7.3:1	6BB+1RB	168g	76cm	9kg	0.31/100, 0.33/90, 0.37/70
HDT100X-A	8.1:1	6BB+1RB	170g	84cm	9kg	0.31/100, 0.33/90, 0.37/70
HDT100X-A	8.1:1	6BB+1RB	167g	84cm	5kg	0.26/100, 0.285/85, 0.31/70



## REEL GREASE & OIL

- » Maximum corrosion protection
- » Fortified with PTFE and polymers
- » Little or no drag acceleration
- » Exceptionally smooth drag performance
- » Superior heat and wear resistance
- » Safe on all metals and common plastics
- » Reduces gear train friction for easier cranking

### TECH SPECS:

CODE	DESCRIPTION
TG-30G	THERMO PLUS GREASE 30G
PA1139	CAL'S GREASE TUB 30G
PA1140	CAL'S GREASE 100G
PA-1141	CAL'S OIL & GREASE MAINTENANCE KIT



## ROD STRAP

- » Okuma neoprene rod wraps makes securing and transporting your rods safer in seconds.
- » The hook and loop fastener attaches anywhere along the length of the strap making them extremely versatile.

### TECH SPECS:

CODE	SIZE
F0426-5	LARGE

## SPOOL BAND

- » The Okuma neoprene spool band is designed to keep your line captive when your not fishing. It fits snugly over a spinning reel spool and are designed to protect your line when the reel is stored and to stop the line from accidentally uncoiling off the spool. These are particularly useful for heavy duty reels that have thick main line or trace where the line clip has difficulty securing it.
- » 2 Per Packet



### TECH SPECS:

CODE	SIZE
PA07019	SIZE 40
PA07017-01	SIZE 65-90



## MULTIPLIER REEL BAG

- » Protect your reels from knocks and the elements with these quality neoprene reel covers with convenient Velcro closures. Perfect for protecting your reels during transport and travel.



### TECH SPECS:

#### CODE

F0424-20  
F0424-21  
F0424-24  
F0424-26

#### SIZE

SMALL  
MEDIUM  
LARGE  
EXTRA LARGE

## SPINNING REEL BAG

- » Protect your reels from knocks and the elements with these quality neoprene reel covers with convenient Velcro closures. Perfect for protecting your reels during transport and travel.



### TECH SPECS:

#### CODE

F0424-26A  
F0424-26B

#### SIZE

MEDIUM  
LARGE

## MULTIPLIER REEL HOLDER

- » Display stand
- » (Reel Not Included)



### TECH SPECS:

#### CODE

PA02017

#### DESCRIPTION

MULTIPLIER REEL HOLDER



## SPINNING REEL HOLDER

- » Display stand
- » (Reel Not Included)

### TECH SPECS:

CODE	DESCRIPTION
PA02009	SPINNING REEL HOLDER



## ROD RACK ABS

- » Protect your tackle and fishing equipment investments from clutter and damage with a durable Okuma Rack System. Easy to Assemble 2-sided utility rod rack. This rack can combine for a free standing 2-sided rack or separate for two flush mounted wall racks.

### TECH SPECS:

CODE	DESCRIPTION
PA0KM1000	ROD RACK ABS (RECTANGULAR)

## ROD RACK WOODEN

- » Protect your tackle and fishing equipment investments from clutter and damage with a wooden Okuma rod rack.



### TECH SPECS:

CODE	DESCRIPTION
750510	MAKAIRA LOGO
750550	BLACK LARGE
750500	AUTOCLAVE GREEN
750501	BLACK
750502	BLUE
750503	CHOCOLATE
750504	GREEN
750505	NATURAL
750506	PINK
750507	ROYAL
750508	RED

NEW FOR 2021



## RECON CAP

TECH SPECS:

CODE  
140517

NEW FOR 2021



## OLIVE CAMO CAP

TECH SPECS:

CODE  
140528

NEW FOR 2021



## RED CAP

TECH SPECS:

CODE  
140527

NEW FOR 2021



## ROYAL CAP

TECH SPECS:

CODE  
140526



## BLACK COTTON CAP

TECH SPECS:

CODE  
PA01C017B



## BLACK MESH CAP

TECH SPECS:

CODE

PA01C018B



## PINK COTTON CAP

TECH SPECS:

CODE

759102



## BLACK CAMOUFLAGE CAP

TECH SPECS:

CODE

759101

NEW FOR 2021



## ROYAL BEANIE

TECH SPECS:

CODE

140523

NEW FOR 2021



## KHAKI BEANIE

TECH SPECS:

CODE

140524



## SUNSHADE

- » Breathable lightweight fabric
- » Quick drying
- » Use to cover face / neck / head from sun

### TECH SPECS:

#### CODE

PA01C019K  
PA01C020B

#### DESCRIPTION

BLACK MOTIF  
BLUE MOTIF

## SLEEVE

- » Okuma's sleeve collection is made out of breathable light fabric, not only for you to feel cool and comfortable but to also protect you from the harmful rays of the sun whilst fishing.

### TECH SPECS:

#### CODE

PA01T057KS  
PA01T057KM  
PA01T057KL  
PA01T058WS  
PA01T058WM  
PA01T058WL  
PA01T059KS  
PA01T059KM  
PA01T059KL

#### COLOUR

NEW - OKUMA SLEEVES BLACK  
NEW - OKUMA SLEEVES BLACK  
NEW - OKUMA SLEEVES BLACK  
NEW - OKUMA SLEEVES WHITE  
NEW - OKUMA SLEEVES WHITE  
NEW - OKUMA SLEEVES WHITE  
CLOTHING SLEEVE OKUMA MOTIF BLUE SMALL  
CLOTHING SLEEVE OKUMA MOTIF BLUE MEDIUM  
CLOTHING SLEEVE OKUMA MOTIF BLUE LARGE

#### SIZE

SMALL  
MEDIUM  
LARGE  
SMALL  
MEDIUM  
LARGE  
SMALL  
MEDIUM  
LARGE







## SHORT SLEEVE GAMEFISH

**TECH SPECS:**

**CODE**

759220  
759221  
759222  
759223  
759224

**SIZE**

MEDIUM  
LARGE  
EXTRA-LARGE  
2 EXTRA-LARGE  
3 EXTRA-LARGE



## SKELETON BLUE

**TECH SPECS:**

**CODE**

759200  
759201  
759202  
759203  
759204

**SIZE**

MEDIUM  
LARGE  
EXTRA-LARGE  
2 EXTRA-LARGE  
3 EXTRA-LARGE



## LONG SLEEVE CAMO

**TECH SPECS:**

**CODE**

759210  
759211  
759212  
759213  
759214

**SIZE**

MEDIUM  
LARGE  
EXTRA-LARGE  
2 EXTRA-LARGE  
3 EXTRA-LARGE

## LONG SLEEVE GAMEFISH



### TECH SPECS:

#### CODE

759215  
759216  
759217  
759218  
759219

#### SIZE

MEDIUM  
LARGE  
EXTRA-LARGE  
2 EXTRA-LARGE  
3 EXTRA-LARGE

## LONG SLEEVE BLACK BLUE CLAW



### TECH SPECS:

#### CODE

759231  
759232  
759233  
759234  
759235  
759236

#### SIZE

SMALL  
MEDIUM  
LARGE  
EXTRA-LARGE  
2 EXTRA-LARGE  
3 EXTRA-LARGE

## LONG SLEEVE TOURNAMENT



### TECH SPECS:

#### CODE

759238  
759239  
759240  
759241  
759242

#### SIZE

SMALL  
MEDIUM  
LARGE  
EXTRA-LARGE  
2 EXTRA-LARGE  
3 EXTRA-LARGE

**okuma**  
INSPIRED FISHING